

*A FEW INCHES<sup>2</sup>*  
**HELPING**  
**YOUR DREAMS**  
**TO SOAR**

**GENERAL AVIATION**





# A FEW INCHES<sup>2</sup> HELPING YOU RISE ABOVE THE CLOUDS



## MICHELIN® AIR X® RADIAL TIRES

### Reduces Operating Costs

- Radial casing design helps to provide more landings
- Designed to burn less fuel

### Provides Peace of Mind

- Exceptional resistance to foreign object damage (FOD).
- Michelin is a trusted brand of aircraft manufacturers.

### Environmentally Friendly

- Radial tire construction is designed to utilize fewer components
- Less fuel used means less CO<sub>2</sub> emissions.

### MICHELIN NZG RADIAL TECHNOLOGY

#### MORE LANDINGS

Extra strong radial casing design Flexible radial casing reduces tread squirm

#### LABOR SAVINGS

Fewer tire changes due to more landings

#### FUEL SAVINGS

Lightweight radial design = measurable savings and increased range

#### WEATHER PROTECTION

Special sidewall compounds for longterm ozone and UV light protection

#### RESISTANCE TO FOREIGN OBJECT DAMAGE (FOD)

Ultra-strong NZG technology

Your business depends on aviation.  
At Michelin, we clearly understand that  
and remain 100% committed to provide the tires  
and related services you need  
to succeed in your mission.

A FEW OF THE MANUFACTURERS THAT CHOOSE MICHELIN AS ORIGINAL EQUIPMENT:





# MICHELIN® AIR® BIAS TIRES

For most aviators, flying is more than a hobby or profession. It's a passion, part of a lifestyle that relishes the sense of adventure and freedom that human flight provides. For many, that passion also extends to the aircraft and everything about it, including its tires – something we are very passionate about.

## MICHELIN® AIR® BIAS TIRES FOR BUSINESS JETS, PISTON AND TURBOPROP AIRCRAFT



- 

**OUTSTANDING VALUE**  
A quality MICHELIN® tire at an excellent price.
- 

**LONG TIRE LIFE**  
Highly-durable rubber compounds.
- 

**WEATHER PROTECTION**  
Special sidewall compounds for longterm ozone and UV light protection.
- 

**WET GRIP**  
Designed to provide excellent hydroplane resistance.
- 

**OUTSTANDING STABILITY**  
Extra-strong sidewalls for enhanced nose landing gear safety.
- 

**EXCEPTIONAL BALANCE**  
Exclusive manufacturing process results in built-in balance for smooth taxiing and even tire wear.

# A FEW INCHES<sup>2</sup> CONNECTING YOUR LIFESTYLE TO THE SKY



A FEW OF THE MANUFACTURERS THAT CHOOSE MICHELIN AS ORIGINAL EQUIPMENT:





# A FEW INCHES<sup>2</sup> OF ULTIMATE PERFORMANCE



## MICHELIN® PILOT® TIRES THE NEW #1

**MICHELIN® PILOT® HIGH PERFORMANCE  
BIAS TIRES FOR PISTON AND TURBOPROP  
AIRCRAFT**



### EXTRA LONG TIRE LIFE

More landings due to highly-durable rubber compounds and up to 21% deeper skid depth than the leading competitor's tires\*\*



### OPTIMIZED TREAD PROFILE

Helps provide for true track taxi, take offs, and landings



### TUBELESS DESIGN

Reduces overall wheel weight and helps eliminate tire creep on the wheel (MICHELIN® Pilot® tires can be used with a tube on tube-type rims)



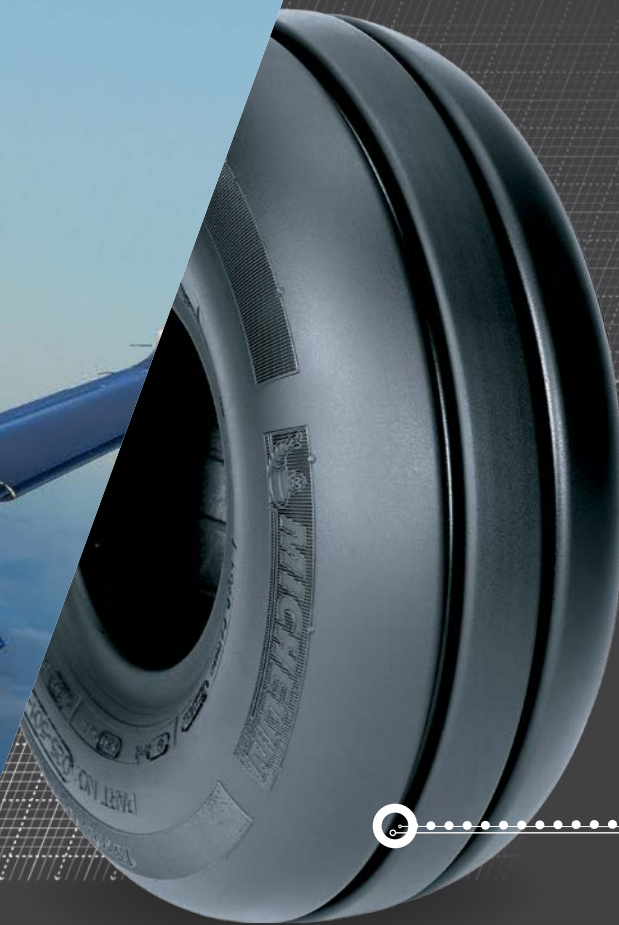
### ALL WEATHER PROTECTION

Designed for longterm ozone and UV light protection, and excellent hydroplane resistance



### EXCEPTIONAL BALANCE

Exclusive manufacturing process results in built-in balance for smooth taxing and even tire wear



**OUR LATEST BIAS TIRE INCLUDES EXTRA DEEP SKID  
DEPTH TO HELP PROVIDE EXTRA LONG TIRE LIFE**

As our history proves, Michelin never stops innovating. Building on our heritage of offering ultra high performance tires for cars and motorcycles, MICHELIN® Pilot® aircraft tires are designed to be the best tire money can buy for propeller driven aircraft, offering the latest high performance features.

UP TO **21%**  
MORE TREAD  
SKID DEPTH VS.  
THE LEADING  
COMPETITOR\*

\*Based on actual sidewall indications for skid depth of 15.00x6-6, 6 ply Goodyear tire size (shown above), required by U.S. FAA regulations.

\*\* Based on sidewall markings for the 15.00 x 6-6 6 ply tire.



MICHELIN® Pilot®  
Tread Skid Depth: 0.34 in / 8.6  
mm

Goodyear  
Tread Skid Depth : 0.28 in / 7.1  
mm



# A FEW INCHES<sup>2</sup> OF PIONEERING HERITAGE

**"EVER HIGHER,  
THE FUTURE  
IS IN THE SKIES"**

Thanks to its global reputation, Michelin is internationally recognized as the No.1 tire manufacturer in the world\*.

For over 100 years, Michelin has repeatedly stepped up to confront the challenges faced by the aeronautic industry.

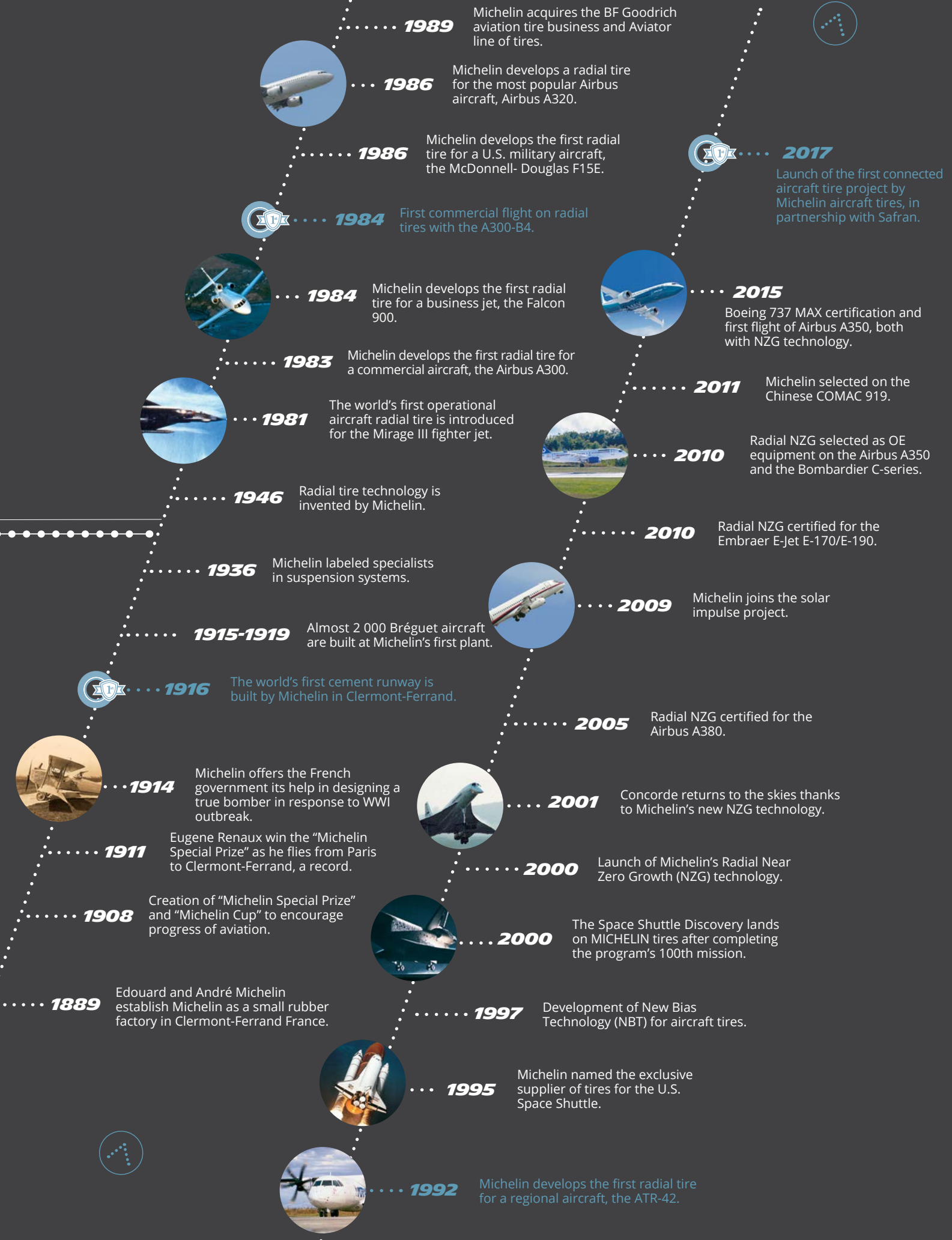
It has pioneered beyond the frontiers of technology, seeking out new developments and offering its clients greater mobility solutions.

Michelin will continue to rise to the occasion, offering the very best in aircraft tire innovation.

## DID YOU KNOW ?

ANDRÉ MICHELIN  
WAS A CO-FOUNDER  
OF THE AÉRO-CLUB  
DE FRANCE  
CREATED IN 1898.

\*Source: Reputation Institute





# MICHELIN® AIRSTOP® TUBES

Maximize airtime and minimize downtime with MICHELIN® AIRSTOP®



## EXCELLENT AIR RETENTION

Exclusive Michelin butyl rubber compound offers outstanding air retention properties.



## HIGHLY RELIABLE AND EASY TO INSTALL

"Right Sized" optimal fit between the tube and the tire casing.



## BUILT-IN BALANCE

Unique tube design assists in achieving overall wheel assembly balance.



## AVIATION EXPERTS

### WE'RE READY WHEN YOU NEED US

- Michelin's aviation business unit includes a dedicated team of technical experts and sales professionals devoted strictly to aircraft tires.
- Michelin provides expert tire program solutions including tire care, service training and technical visits.
- Michelin offers worldwide coverage through an integrated global team that shares best practices across all disciplines.
- Michelin has a long and storied history in aviation dating back to 1908.

### MICHELIN SALES OFFICE LOCATIONS

Europe, CIS, Middle East & Africa  
Michelin Aircraft Tyre  
23, Place des Carmes-Déchaux  
63040 Clermont-Ferrand Cedex 9  
France  
Phone: +33 (0) 4 73 30 14 85

North, Central & South America  
North America  
Michelin Aircraft Tire Company  
One Parkway South  
Greenville, South Carolina 29615  
USA  
Phone: +1-877-503-8071

Central & South America  
Av. das Américas, 700 • Bloco 4  
Barra da Tijuca  
Rio de Janeiro  
RJ-BRAZIL  
Phone: +55-21-3621-4711

Asia and Oceania  
Thailand  
Michelin Siam Co., Ltd.  
Head Office in Bangkok  
33/4 Rama 9 Road,  
Huay Kwang Sub-district,  
Huay Kwang District,  
Bangkok 10310, THAILAND  
Phone: +662-700-3000

China  
Michelin Aircraft Tire Company  
Block 7, 518, North Fu Quan Road,  
Chang Ning District,  
Shanghai, 200335, P.R.CHINA  
Phone: (8621) 2285-5000

AIRSTOP  
5.00-5  
5CG67 Part Number  
3 50 08  
MICHELIN  
(Type III) Valve Tret  
092 - 308 - 0  
MADE IN ITALY





***WHICH MICHELIN®  
TIRE IS RIGHT FOR  
YOUR AIRCRAFT?***

