

2024 PRODUCT CATALOG



Instruments and Avionics

Electrical Power Systems

Lithium-ion Batteries

General Aviation

Business Aviation

Commercial Aviation

Defense and Special Missions

Advanced Air Mobility

2-INCH DIGITAL INSTRUMENTS

Smooth, high-resolution graphics



ON THE
COVER



Pilatus PC-12

Standard Equipment: TA202 Series High Power USB Chargers

STC Approved: True Blue Power® Gen5 TB40 Lithium-ion Aircraft Battery, TB44 Lithium-ion Aircraft Battery, TS835 Series Emergency Battery Power Supply, MD302 SAM® Standby Attitude Module, MD23 Digital ACU

Welcome!

We're proud that **Mid-Continent Instruments and Avionics** and **True Blue Power** are your source for quality instruments and avionics, electrical power systems and lithium-ion batteries. Backed by 60 years of experience, our team of expert technicians, engineers and customer service representatives are ready and available to support you.

As our partner, you benefit from safe and certified products, manufactured through innovative technologies and sophisticated clean-sheet designs. You have access to 24/7 AOG support and an extensive inventory of new, cutting-edge products that are stocked and ready to ship, when you need them most. Even better, our Quality Management System at our Wichita manufacturing facility is AS9100D an ISO9001:2015 certified. That means the products you rely on meet the strictest quality standards.

Our products are sold to qualified aviation businesses that serve general, business and commercial aviation, defense and special mission, UAV, all-electric, hybrid-electric and eVTOL aircraft.

Are you a pilot or aircraft owner? You can purchase our products from Authorized Dealers, worldwide. Visit our Dealer Locator at **mcico.com/dealer-locator** or use the QR code below to find products near you.



Dealer Locator



Quality Management System
AS9100D and ISO9001:2015 Certified
Wichita, Kansas manufacturing facility

Table of Contents



| | |
|--|----|
| Airspeed Indicators | 4 |
| Altimeters | 6 |
| Annunciation Control Units (ACU) | 7 |
| Attitude Indicators | 10 |
| Autopilots | 16 |
| NEW Batteries | 19 |
| Battery Chargers | 20 |
| NEW Battery STC Kits | 22 |
| Carburetor Temperature Indicators and Probes | 23 |
| Clocks | 25 |
| Converters | 26 |
| Course Deviation Indicators (CDI) | 27 |
| Directional Gyros (DG) | 28 |
| NEW Emergency Battery Power Supplies | 30 |
| Emergency Locator Transmitters (ELT) | 32 |
| Flex® Custom Function Displays | 35 |
| NEW Frequency Converters | 37 |
| Ground Power Units (GPU) | 37 |
| Inverters | 39 |
| Light Trays | 40 |
| Magnetometers | 41 |
| Manifold Pressure Gauges | 41 |
| NEW NAV / COM Radios | 42 |
| Outlets | 43 |
| Radars | 43 |
| Remote Relay Units | 43 |
| SAM® Standby Attitude Modules | 45 |
| Transponders | 46 |
| Turn and Slip Indicators | 46 |
| Turn Coordinators | 47 |
| USB Chargers | 48 |
| NEW USB Charger Accessories | 51 |
| Vertical Speed Indicators (VSI) | 52 |

The 3-PACK is BACK!



Digital Attitude Indicator



Digital Counter Drum Encoding Altimeter



Digital Airspeed Indicator

2-inch Digital Standby Package

AML STC APPROVED ON 180+ AIRCRAFT MODELS



Learn more

 **MidContinent®**
INSTRUMENTS+AVIONICS

Airspeed Indicators



MD23-225

Airspeed Indicators, 2-inch, Digital Mid-Continent Instruments and Avionics

This 2-inch digital Airspeed Indicator features smooth, high-resolution graphics with numeric readout, user-configurable range markings, and Mach/MMO indication. Ground Speed and True Air Speed can be displayed with external ARINC input. Night Vision Imaging System (NVIS) compatible versions are available.

Rechargeable and field-replaceable
Emergency Battery Power Supply (Page 30)



TS6

| PART NO. | CONFIGURATION | LIST PRICE |
|----------|---|------------|
| MD23-225 | 160, 200, 300, 400 or 500 knots/MPH (configurable), LCD | \$5,500 |



8000 Airspeed

Shown with range markings

Airspeed Indicators, 3-inch, Analog United Instruments

These popular 3-inch airspeed indicators are ideal for new installations or as a retrofit for older, outdated indicators. Specific range markings and dial configurations can be added to correspond with each individual aircraft.

The 8100 Series provides true airspeed indication by turning the knob and setting the outside air temperature in the TAS window.

| MODEL NO. | CONFIGURATION | LIST PRICE |
|--------------|--|------------|
| 8000 Series | 150, 200, 250, 300 or 400 MPH | \$1,365 |
| 8000 Series* | 150, 200, 250, 300 or 400 MPH, Lighted | \$1,838 |
| 8100 Series | 180, 200, 250, 300 or 400 MPH | \$1,474 |
| 8100 Series* | 180, 200, 250, 300 or 400 MPH, Lighted | \$1,947 |

Range markings \$300 additional. Allow lead time for dials.

Aircraft pilot operating handbook and registration required.

* Specify lighting voltage and type (LED or incandescent) when ordering



8100 True Airspeed



Beechcraft King Air 350

STC Approved

Chronos CH93MAX Clock / USB Charger
MD23-215 Digital Counter Drum Encoding Altimeter
MD23-225 Digital Airspeed Indicator
MD23-342 Digital Attitude Indicator
True Blue Power® TB44 Aircraft Battery

Accessory

True Blue Power® Pro Battery Charger



Altimeters



MD23-215

Altimeters, 2-inch, Counter Drum, Encoding, Digital

Mid-Continent Instruments and Avionics

This 2-inch Counter Drum Encoding Altimeter is an ideal replacement for aging indicators. With smooth, high-resolution graphics and operating range of up to 55,000 feet, it offers user-selectable vertical speed indication and—for the first time—user-selectable 6-second vertical trend. SSEC customization and Night Vision Imaging System (NVIS) compatible versions are available.

Rechargeable and field-replaceable
Emergency Battery Power Supply (Page 30)



TS6

| PART NO. | CONFIGURATION | LIST PRICE |
|----------|-------------------------------|------------|
| MD23-215 | 55K, Inches or millibars, LCD | \$5,500 |



5934P-3A.83

Altimeters, 3-inch, 3-pointer, Analog

United Instruments

Designed to help the pilot determine altitude by measuring existing atmospheric pressure, these altimeters translate the measurement into “height above sea level”. This is indicated on the dial of the instrument in feet, which requires setting the barometric pressure in the Kollsman window.

| PART NO. | CONFIGURATION | LIST PRICE |
|-----------------|--|------------|
| 5934P-3A.83 | 20K, Inches | \$2,115 |
| 5934P-3A.194* | 20K, Inches, Lighted | \$2,600 |
| 5934PD-3A.130 | 20K, Dual scale | \$2,162 |
| 5934PD-3A.250* | 20K, Dual scale, Lighted | \$2,642 |
| 5934PM-3A.84 | 20K, Millibars | \$2,115 |
| 5934PM-3A.199* | 20K, Millibars, Lighted | \$2,600 |
| 5934PA-3A.86 | 35K, Inches | \$2,380 |
| 5934PA-3A.122* | 35K, Inches, Lighted | \$2,860 |
| 5934PAD-3A.132 | 35K, Dual scale | \$2,423 |
| 5934PAD-3A.259* | 35K, Dual scale, Lighted | \$2,903 |
| 5934PAM-3A.87 | 35K, Millibars | \$2,380 |
| 5934PAM-3A.185* | 35K, Millibars, Lighted | \$2,860 |
| 5934-3A.154* | 20K, Inches, Lighted, Helicopter application | \$2,600 |

* Specify lighting voltage and type (LED or incandescent) when ordering



5934PAM-3A.87

Altimeters, Annunciation Control Units

Altimeters, 3-inch, Baro Output, Analog

United Instruments

Compatible with most air data systems, this lighted indicating altimeter provides standard DC barometric output to 35,000 feet.

| PART NO. | CONFIGURATION | LIST PRICE |
|-------------------|---------------------------------------|------------|
| 5934PAD-3BA.649P* | 35K, Dual scale, Baro output, Lighted | \$4,930 |

* Specify lighting voltage and type (LED or incandescent) when ordering



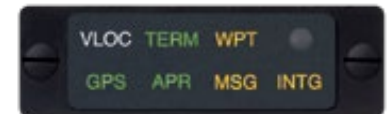
5934PAD-3BA.649P

ACUs for Avidyne

Mid-Continent Instruments and Avionics

IFD 440/540

| PART NO. | CONFIGURATION | LIST PRICE |
|------------|---|------------|
| MD41-1484W | Horizontal, 14V, No buttons, LED lighting | \$870 |
| MD41-1488W | Horizontal, 28V, No buttons, LED lighting | \$870 |



MD41-1484W



SOUTHERN CROSS
AVIATION

**WORLDWIDE AIRCRAFT
PARTS DISTRIBUTOR**



BRAKE



IGNITOR



PISTON



TURBINE



FUEL NOZZLE



BATTERY



ISOLATOR

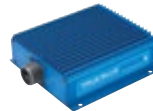


FUEL

Helping Airlines, FBOs, Repair Stations, Fleet Operators & Aircraft owners worldwide find exactly the correct part for the right price.

AN AUTHORIZED
DISTRIBUTOR

for Mid-Continent Instruments and Avionics
& True Blue Power



ANCHORAGE, AK • 907-416-7500

FT. LAUDERDALE, FL • 954-377-0320

SCROSS.COM/STORE





Bell 505 Jet Ranger X

Standard Equipment

SAM® MD302 Standby Attitude Module
True Blue Power® TB17 Aircraft Battery

STC Approved

True Blue Power® TA202 Series USB Chargers

Accessory

True Blue Power® Pro Battery Charger



Annunciation Control Units

ACUs for Garmin GPS / NAV / COMM / MFD

Mid-Continent Instruments and Avionics

GPS 400/500, GNC 420/520, GTN 625/725

| PART NO. | CONFIGURATION | LIST PRICE |
|------------|-------------------------------------|------------|
| MD41-1408A | Horizontal, 28V (head only) | \$1,439 |
| MD41-1408A | Horizontal, 28V (with remote relay) | \$2,904 |



MD41-1408A

GNC 420W, GNS 430W/530W

| PART NO. | CONFIGURATION | LIST PRICE |
|------------|---|------------|
| MD41-1484W | Horizontal, 14V, LED lighting, No buttons | \$870 |
| MD41-1468A | Horizontal, 28V | \$1,410 |
| MD41-1488W | Horizontal, 28V, LED lighting, No buttons | \$870 |



MD41-1468A

GTN 650/750 SERIES

| PART NO. | CONFIGURATION | LIST PRICE |
|-----------|--|------------|
| MD41-1510 | Horizontal, 28V, LED lighting | \$1,077 |
| MD41-1514 | Horizontal, 28V, 5V lighting, LED lighting | \$1,077 |



MD41-1510

ACUs for Garmin TAWS

Mid-Continent Instruments and Avionics

| PART NO. | CONFIGURATION | LIST PRICE |
|-----------|---|------------|
| MD41-1028 | 1-button, Horizontal, 28V, LED lighting | \$1,362 |
| MD41-1048 | 3-button, Horizontal, 28V, HTAWS | \$1,362 |

HTAWS: Helicopter Terrain Awareness Warning System



MD41-1028



MD41-1048

RELATED PRODUCTS

Remote Relay Units (Page 43)

| PART NO. | CONFIGURATION | LIST PRICE |
|----------|-------------------|------------|
| MD41-244 | 24-pole, 14V, TSO | \$1,465 |
| MD41-248 | 24-pole, 28V, TSO | \$1,465 |



MD41-248

Annunciation Control Units, Attitude Indicators



MD23-104

Lithium-ion Battery ACUs, 2-inch, Digital

Mid-Continent Instruments and Avionics

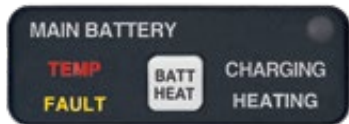
This digital Annunciation Control Unit (ACU) monitors and displays True Blue Power® Gen5 lithium-ion battery parameters. It features smooth, high-resolution graphics and provides status, state of charge, state of health, volts, amps, temperature, remaining life and fault data. Night Vision Imaging System (NVIS) compatible versions are available.

Rechargeable and field-replaceable
Emergency Battery Power Supply (Page 30)



TS6

| PART NO. | CONFIGURATION | LIST PRICE |
|----------|--|------------|
| MD23-104 | True Blue Power Gen5 batteries (configurable), LCD | \$2,500 |



MD41-1817

Lithium-ion Battery ACUs

Mid-Continent Instruments and Avionics

These ACUs interface with True Blue Power's lithium-ion aircraft batteries, delivering accurate status information to the cockpit. They are designed to be clearly visible in daylight and feature external dimming adjustments for balancing low-level light conditions.

| PART NO. | CONFIGURATION | LIST PRICE |
|-----------|----------------------------------|------------|
| MD41-1817 | 1-button, Horizontal, 28V (TB17) | \$1,318 |
| MD41-1844 | 1-button, Horizontal, 28V (TB44) | \$1,318 |



MD23-342

Attitude Indicators, 2-inch, Digital

Mid-Continent Instruments and Avionics

This digital Attitude Indicator is a solid-state instrument that displays attitude, slip, turn rate and heading information during normal or standby operation. The certified, MD23-342 provides independent attitude without the need for GPS, magnetometer or airspeed. Night Vision Imaging System (NVIS) compatible versions are available.



MD32

Remote Magnetometer (Page 41)

Rechargeable and field-replaceable
Emergency Battery Power Supply (Page 30)



TS6

| PART NO. | CONFIGURATION | LIST PRICE |
|----------|---|------------|
| MD23-342 | 2-inch, Attitude, Slip, Turn rate, Heading, LCD | \$6,500 |



STOCKING DISTRIBUTOR

**Mid-Continent Instruments
and Avionics**

True Blue Power®



USB Chargers



CHRONOS®
Digital Clocks / USB Chargers



Turn Coordinators



You only get one chance to install a Lifesaver.®

If your aircraft loses power, the Lifesaver may be the difference between life and death. The Lifesaver is the only electric attitude indicator with a built-in battery backup. It gives you one full hour of emergency attitude reference, the precious time you need to land safely. Install the Lifesaver now.

You may not get a second chance.



Lifesaver® Attitude Indicators, 3-inch, Electric

Mid-Continent Instruments and Avionics

The Lifesaver® is the only electric attitude indicator with a self-contained, nickel-metal hydride battery backup that provides one hour of emergency attitude reference in the event of power failure. With 7,500 hours MTBF—more than double that of the competition—it is an exceptional value. Added safety, ease of installation and cost benefit make this an ideal primary or standby artificial horizon.

Versions available to match existing instrument/EFIS displays. Anti-reflective glass and long-life lighting are standard on all Mid-Continent Instruments and Avionics attitude indicators.

LIFESAVER® — with BATTERY BACKUP

| PART NO. | CONFIGURATION | LIST PRICE |
|---------------------|--|------------|
| Lifesaver 4300-215 | 10–32V, Lighted, 7.5°, Beechcraft, Inclinator | \$6,721 |
| Lifesaver 4300-411* | 10–32V, Lighted, 0–8° | \$6,565 |
| Lifesaver 4300-611* | 10–32V, Lighted, 0–8°, Auto switch to STBY power | \$6,565 |
| 6430043-1 | Battery charger/tester | \$1,798 |
| 36027-1 | Front mount adapter, 1/2-inch thick | \$638 |
| 36028-1 | Front mount adapter, 3/32-inch thick | \$137 |
| 36022 | Knob cover | \$87 |
| MS3116F8-4S** | Mating connector | \$53 |
| PW-XX | Panel wedges | \$204 |
| 9015671 | Remote mount kit for battery pack | \$121 |
| 9015607 | Replacement battery pack, NiMH | \$355 |
| 36023 | Slip indicator, Inclinator | \$430 |



Lifesaver® 4300-215



Lifesaver® 4300-411

* Specify panel tilt, lighting voltage and type (LED or incandescent) when ordering

** Included with purchase of Lifesaver® attitude indicators

RELATED PRODUCTS

Light Trays (Page 40)

| PART NO. | CONFIGURATION | LIST PRICE |
|------------|--|------------|
| 9015640-1 | 3-inch, 5V, Incandescent, (4300 Series) | \$123 |
| 9016909-5 | 3-inch, 5V, LED, (4300 Series) | \$123 |
| 9015640-10 | 3-inch, 5V, NVIS, (4300 Series) | \$674 |
| 9015640-2 | 3-inch, 14V, Incandescent, (4300 Series) | \$123 |
| 9016909-14 | 3-inch, 14V, LED, (4300 Series) | \$123 |
| 9015640-3 | 3-inch, 28V, Incandescent, (4300 Series) | \$123 |
| 9016909 | 3-inch, 28V, LED, (4300 Series) | \$123 |
| 9015640-12 | 3-inch, 28V, NVIS, (4300 Series) | \$674 |



9015640-2



9015640-10



9015640-12



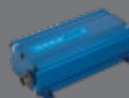
De Havilland Canada Dash 8

STC Approved

| | |
|-----------------|--|
| 100/200/300/400 | True Blue Power® TA202 Series USB Chargers |
| 100/200/300/400 | SAM® MD302 Standby Attitude Module |
| 100/200/300/400 | True Blue Power® TS60 Emergency Battery Power Supply |
| 100/200/300 | True Blue Power® TB44 Aircraft Battery |

Accessory

True Blue Power® Pro Battery Charger



Attitude Indicators, 3-inch, Electric

Mid-Continent Instruments and Avionics

Engineered as a primary or standby artificial horizon in fixed-wing aircraft and helicopters, the single connection on these units makes installation a snap. These indicators are standard equipment on many OEM aircraft, including the Beechcraft Baron and Bonanza.

Featuring 10–32 volt DC operation, anti-reflective glass, long-life lighting and 7,500 hours MTBF, these attitude indicators are a cost-effective and safe alternative to unreliable vacuum systems.

| PART NO. | CONFIGURATION | LIST PRICE |
|-----------|-----------------------------------|------------|
| 4300-206 | 10–32V, 6.5°, Diamond, Inclinator | \$6,078 |
| 4300-203 | 10–32V, 11°, Robinson, Inclinator | \$6,206 |
| 4300-208 | 10–32V, 14°, Cirrus, Inclinator | \$5,729 |
| 4300-311* | 10–32V, 0–8°, Lighted | \$5,442 |

* Specify panel tilt, lighting voltage and type (LED or incandescent) when ordering



4300-206



4300-311

Attitude Indicators, 3-inch, Air

Sigma-Tek

Sigma-Tek attitude gyros are among the most popular air-driven gyros in general aviation. These trusted instruments have been used for many years on Cessna, Piper and Beech aircraft.

| MODEL NO. | CONFIGURATION | LIST PRICE |
|-----------|----------------------------------|------------|
| 5000B-36 | 0° | \$2,099 |
| 5000B-37* | 0°, Lighted | \$2,577 |
| 5000B-38 | 0°, Warning flag option | \$2,506 |
| 5000B-40* | 0°, Lighted, Warning flag option | \$2,949 |
| 5000B-42 | 8° | \$2,404 |
| 5000B-54* | 8°, Lighted | \$2,929 |

* Specify lighting voltage and type (LED or incandescent) when ordering



5000B-36



5000B-40

Autopilots



AC100XX

Autopilots, Certified BendixKing (Honeywell)

The **AeroCruze 100** is an affordable and flexible digital autopilot system for Cessna 172, 175, 177, 180, 182, 185; Piper PA-28, PA-32; and select Mooney M20 series aircraft.

| MODEL NO. | PART NO. | CONFIGURATION | LIST PRICE |
|----------------|----------|---|-------------|
| AeroCruze 100* | AC100XX | Autopilot system, 2-inch round controller, includes servos and installation kit | Please call |
| AeroCruze 100* | AC100XX | Autopilot system, 3-inch round controller, includes servos and installation kit | Please call |
| AeroCruze 100* | AC100XX | Autopilot system, Flat pack controller, includes servos and installation kit | Please call |

* Specify aircraft type, aircraft model and voltage when ordering



XC100-XXX

Autopilots, Experimental BendixKing (Honeywell)

The **xCruze 100** digital autopilot system is designed for the experimental aircraft cockpit and interfaces with popular experimental EFIS solutions.

| MODEL NO. | PART NO. | CONFIGURATION | LIST PRICE |
|----------------|-----------|--|-------------|
| xCruze 100* | XC100-XXX | Autopilot control head, 2-inch, Round, with installation kit | Please call |
| xCruze 100* | XC100-XXX | Autopilot control head, 3-inch, Round, with installation kit | Please call |
| xCruze 100* | XC100-XXX | Autopilot control head, Flat pack, with installation kit | Please call |
| BS-B | 8100-070 | Servo | Please call |
| BS-C | 8100-071 | Servo | Please call |
| PS-B | 8100-072 | Servo | Please call |
| PS-C | 8100-073 | Servo | Please call |
| Servo Hardware | 8700-110 | Standard arm assembly kit | Please call |
| Servo Hardware | 8700-111 | Standard capstan assembly kit | Please call |

* Specify aircraft type when ordering



Van's Aircraft RV-8

Optional Equipment

True Blue Power® TA360 Series USB Chargers
BendixKing xCruze 100 Autopilot
True Blue Power® TB28-12V Aircraft Battery

Accessory

True Blue Power® Pro Battery Charger





Cirrus SR22

Standard Equipment

True Blue Power® TA360 Series USB Charger
Lifesaver® Attitude Indicator 4300-208
SAM® MD302 Standby Attitude Module
True Blue Power® TB14 Aircraft Battery

Accessory

True Blue Power® Pro Battery Charger



Batteries, Lithium-ion

True Blue Power®

Start LIGHTER, start FASTER and start SMARTER every time. True Blue Power® batteries save up to 85 pounds per battery cutting aircraft battery weight by more than 60% and increasing your useful load. Less weight means you'll have more passengers, more cargo, more fuel and more design flexibility. Even better, you'll protect your engine and extend component life with faster and cooler engine starts and have access to real-time state-of-charge data, on demand.

Batteries

**LITHIUM-ION
BATTERY
STC Kits**

(Page 22)

| MODEL NO. | PART NO. | CONFIGURATION | LIST PRICE |
|-----------|------------|--|-------------|
| TB14 | 6430014-2 | 13 amp hour, Aluminum case | Please call |
| TB14 | 6430014-21 | 13 amp hour, Steel case | Please call |
| TB17 | 6430017-1 | 17 amp hour, Aluminum case | Please call |
| TB17 | 6430017-2 | 17 amp hour, Heater on/off feature, Aluminum case | Please call |
| TB17 | 6430017-3 | 17 amp hour, Quick disconnect, Aluminum case | Please call |
| TB17 | 6430017-4 | 17 amp hour, Heater on/off feature, Quick disconnect, Aluminum case | Please call |
| TB28-12V | 6430014-1 | 26 amp hour, 12 volt, Aluminum case | Please call |
| TB28-12V | 6430014-11 | 26 amp hour, 12 volt, Steel case | Please call |
| Gen5 TB20 | 6430020-1 | 20 amp hour, Aluminum case | Please call |
| Gen5 TB30 | 6430030-1 | 30 amp hour, Aluminum case | Please call |
| Gen5 TB30 | 6430030-2 | 30 amp hour, Serial discharge, Aluminum case | Please call |
| Gen5 TB40 | 6430040-1 | 40 amp hour, Aluminum case | Please call |
| Gen5 TB40 | 6430040-2 | 40 amp hour, Serial discharge, Aluminum case | Please call |
| TB44 | 6430044-2 | 46 amp hour, Aluminum case | Please call |
| TB44 | 6430044-4 | 46 amp hour, No handles, Aluminum case | Please call |
| Gen5 TB60 | 6431060-1 | 60 amp hour, Aluminum case | Please call |
| | 9019697-1 | Connector kit (TB14, TB28-12V) | \$227 |
| | 9018048 | Connector kit (TB17) | \$227 |
| | 9018259 | Connector kit, 90° (TB17) | \$227 |
| | 9018042 | Connector kit (TB44) | \$496 |
| | 9018042-1 | Connector kit (Gen5 TB20, Gen5 TB30, Gen5 TB40, Gen5 TB60) | \$496 |
| | 9018044 | Service cable (TB44) | \$227 |
| | 9019698-1 | Vent kit (TB14, TB28-12V) | \$265 |
| | 9018049 | Vent kit (TB17) | \$265 |
| | 9019322-1 | Vent kit (Gen5 TB20, Gen5 TB30) | \$369 |
| | 9018043 | Vent kit (Gen5 TB40, TB44, Gen5 TB60) | \$492 |



TB14



TB17



Gen5 TB30



Gen5 TB40

RELATED PRODUCTS

Lithium-ion Battery ACUs (Page 9)

| PART NO. | CONFIGURATION | LIST PRICE |
|-----------|---|------------|
| MD23-104 | True Blue Power Gen5 batteries (configurable), Digital, LCD | \$2,500 |
| MD41-1817 | 1-button, Horizontal, 28V (TB17) | \$1,318 |
| MD41-1844 | 1-button, Horizontal, 28V (TB44) | \$1,318 |



MD23-104

Lithium-ion Aircraft Battery TRAINING

Learn from the
experts with **FREE,**
ON-DEMAND
courses.



SCAN TO GET STARTED

– Each course is less than 10 minutes –



Qualifies for one credit hour toward FAA AMT and IA Refresher training

**Mx TT28-2
282-101**



**Mx TT28-2
282-102**



Battery Chargers True Blue Power®


The **True Blue Charger Mx Series** provides simple, safe and automatic charging for lithium-ion and sealed lead-acid aircraft batteries. The 2.5-amp chargers maintain batteries of any capacity, from zero to full state-of-charge, while continuously displaying battery voltage.

The **True Blue Charger PRO TT28-12** is specifically engineered to charge, discharge and test True Blue Power® lithium-ion aircraft batteries. It is capable of a 12.5 amp charge and up to 60 amp discharge. Pre-loaded with the necessary parameters, it allows maintenance personnel to safely and efficiently top charge batteries and perform scheduled capacity checks.



PRO TT28-12

| MODEL NO. | PART NO. | CONFIGURATION | LIST PRICE |
|-------------|--------------|---|------------|
| Mx TT28-2 | 282-101 | 2.5 amp, MS-3509 direct connect | \$1,432 |
| Mx TT28-2 | 282-102 | 2.5 amp, Cable connect | \$1,432 |
| PRO TT28-12 | ACM-1260-101 | 12.5 amp | \$4,573 |
| | 9012-1081 | Battery charging adapter (TS835 Series) | \$925 |
| TT43 | 6430043-1 | Battery charger/tester (TS420 Series) | \$1,798 |



START LIGHTER
START FASTER
START SMARTER



Certified **Lithium-ion** Aircraft Batteries

Cut aircraft battery weight and increase your useful load. Like you, True Blue Power® batteries are always mission ready. They fully recharge within 30 minutes and deliver superior performance in the most rugged environments. Even better, you'll eliminate expensive battery maintenance and the need for ground power units. **Start LIGHTER, start FASTER and start SMARTER every time.**



Learn more

TRUE BLUE POWER® 
A division of Mid-Continent Instrument Co., Inc.

NEW

LITHIUM-ION BATTERY

**STC
KIT**

Gen5 TB40
Battery



MD23-104
Digital Battery ACU

Hawker/Beechjet 400



Battery STC Kits

True Blue Power®

| PART NO. | AIRCRAFT | CONFIGURATION | LIST PRICE |
|--------------|---|-------------------------------------|-------------|
| VFS130-003 | Airbus Helicopters EC130 B4, EC130 T2 | STC kit includes (1) TB17 battery | Please call |
| 7430001-1 | Bonanza A36 | STC kit includes (1) TB17 battery | \$9,298 |
| 7430002-1 | Robinson R44 | STC kit includes (1) TB17 battery | \$10,265 |
| 7430003-1 | Caravan 208/208B | STC kit includes (1) TB44 battery | \$19,776 |
| 7430005-1 | Hawker / Beechjet 400 | STC kit includes (1) TB40 battery | \$24,900 |
| CE295-401-01 | DHC-6 100/200/300 Series | STC kit includes (1) TB44 battery | Please call |
| CE273-401-01 | DHC-8 100/200/300 Series | STC kit includes (2) TB44 batteries | Please call |
| SA01044DE | Pilatus PC-12, /45, /47E, /NG, /NGX, Single Battery | STC kit includes (1) TB40 battery | \$40,990 |
| SA01044DE | Pilatus PC-12, /45, /47E, /NG, /NGX, Dual Battery | STC kit includes (2) TB40 batteries | \$68,875 |
| VFS350-001 | Airbus Helicopters AS350/H125 Series | STC kit includes (1) TB17 battery | Please call |
| SA04303CH | King Air 300 / 350 Series | STC kit includes (1) TB44 battery | Please call |

Carburetor Temperature Indicators and Probes

Carburetor Temperature Indicators

Mid-Continent Instruments and Avionics

| PART NO. | CONFIGURATION | LIST PRICE |
|----------|-------------------|------------|
| MD11-3 | 14V PMA indicator | \$884 |
| MD11-4 | 28V PMA indicator | \$884 |



MD11-4

Carburetor Temperature Probes

Mid-Continent Instruments and Avionics

The B-5 Carb Temp Probe works with MD11 Series Carb Temp Indicators and is approved for many engines. Contact techsupport@mcico.com for STC and PMA information.

| PART NO. | CONFIGURATION | LIST PRICE |
|----------|--------------------|------------|
| B-5 | PMA/STC Probe only | \$533 |



B-5

© Lockheed Martin - All rights reserved, used by permission.



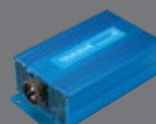
Lockheed Martin X-59

Standard Equipment

True Blue Power® TI2004 Inverter
True Blue Power® TB44 Aircraft Battery

Accessory

True Blue Power® Pro Battery Charger



DIGITAL CLOCKS USB CHARGERS

CHRONOS

The only digital clocks with
MAX USB POWER

UP TO **60 WATTS** PER PORT

8 MODES

Local Time, UTC/Zulu Time,
Flight Timer, Countdown Timer,
Stopwatch, Volts, OAT,
Secondary Air Temp



6420093-0



6420093-3



6420093-2



6420093-4



6420093-5



Learn more

 **MidContinent**[®]
INSTRUMENTS+AVIONICS

CHRONOS® Clocks / USB Chargers, 2-inch, Digital

Mid-Continent Instruments and Avionics

| MODEL NO. | PART NO. | CONFIGURATION | LIST PRICE |
|---------------------------|------------|---|------------|
| CHRONOS CH93 | 6420093-0 | 10–32 VDC in 8 MODES Local time, UTC/Zulu time, Flight timer, Countdown timer, Stopwatch, Volts, OAT, Secondary air temp | \$599 |
| CHRONOS CH93HP | 6420093-3 | 10–32 VDC in, 15W / 3A out per port, Single USB-A 8 MODES Local time, UTC/Zulu time, Flight timer, Countdown timer, Stopwatch, Volts, OAT, Secondary air temp | \$699 |
| CHRONOS CH93HP | 6420093-2 | 10–32 VDC in, 15W / 3A out per port, Dual USB-A 5 MODES Local time, UTC/Zulu time, Flight timer, Countdown timer, Stopwatch | \$679 |
| CHRONOS CH93HP | 6420093-4 | 10–32 VDC in, 15W / 3A out per port, Dual USB-A 8 MODES Local time, UTC/Zulu time, Flight timer, Countdown timer, Stopwatch, Volts, OAT, Secondary air temp | \$799 |
| CHRONOS CH93MAX | 6420093-5 | 22–32 VDC in, 15W / 3A and 60W / 3A out per port, Dual USB-A / USB-C (PD) 8 MODES Local time, UTC/Zulu time, Flight timer, Countdown timer, Stopwatch, Volts, OAT, Secondary air temp | \$899 |
| | 9018178* | Installation kit (6420093-2) | \$39 |
| | 9018178-1* | Installation kit (6420093-0, 6420093-3, 6420093-4, 6420093-5) | \$89 |
| | B-10-1 | Outside air temperature probe, 500 Ω (6420093-0, 6420093-3, 6420093-4, 6420093-5) | \$418 |
| | B-11-1 | Secondary air temperature probe, 500 Ω (6420093-0, 6420093-3, 6420093-4, 6420093-5) | \$356 |
| | B-11-2 | Current sense secondary air temperature probe (6420093-0, 6420093-3, 6420093-4, 6420093-5) | \$356 |

* Included with purchase of associated CHRONOS® product

GPS Clocks, 2-inch, Digital

Mid-Continent Instruments and Avionics

The digital multi-function clock features UTC Time, Local Time and multiple timers. It receives an ARINC 429 input to sync with a GPS source and can also deliver the estimated time to your next waypoint. This digital clock features smooth, high-resolution graphics and can output time to other external equipment. Night Vision Imaging System (NVIS) compatible versions are available.

Rechargeable and field-replaceable
Emergency Battery Power Supply (Page 30)



TS6



MD23-190

| PART NO. | CONFIGURATION | LIST PRICE |
|----------|---|------------|
| MD23-190 | ARINC 429 input sync with GPS source, LCD, 9 FUNCTIONS Local time, UTC/Zulu time, Flight timer, Countdown timer, Stopwatch, Date, Time to waypoint, Hobbs, Run timer | \$3,990 |

Converters



TC230

Converters, DC-to-DC True Blue Power®

The **TC120** and **TC240 Series** are multi-purpose, step-down voltage converters with variable output. Supplying 5 to 24 volts of power, the TC120 and TC240 are ideal for low-voltage DC electronics, including in-seat, cabin and cockpit power applications.

The **TC230 Series** converters are the smallest and lightest step-up voltage converters available today. Utilizing the aircraft's 14-volt system, the TC230 powers 28-volt avionics, instruments and accessories, including radios, GPS and electronic equipment.

| MODEL NO. | PART NO. | CONFIGURATION | LIST PRICE |
|-----------|-----------|--|-------------|
| TC120 | 6430120-1 | 120 watts, 24–32 VDC input, 5–24 VDC output | \$715 |
| TC120 | 6430120-2 | 120 watts, 24–32 VDC input, 5–24 VDC output, Remote on/off | \$715 |
| TC120 | 6430120-3 | 120 watts, 22–32 VDC input, 5–24 VDC output, Military environmental and EMI qualifications | \$1,302 |
| TC230 | 6430234-1 | 230 watts, 10–18 VDC input, 28 VDC output | \$1,201 |
| TC230 | 6430234-2 | 230 watts, 10–18 VDC input, 28 VDC output, Remote on/off | \$1,201 |
| TC240 | 6430240-1 | 240 watts, 24–32 VDC input, 5–24 VDC output | \$1,192 |
| TC240 | 6430240-2 | 240 watts, 24–32 VDC input, 5–24 VDC output, Remote on/off | \$1,192 |
| TC351* | 6430351-1 | 350 watts, 24–32 VDC input, 115 VDC output, Remote on/off | Please call |

* Not FAA TSO certified



TC2000

Converters, AC-to-DC True Blue Power®

The **TC280** converter produces enough energy to power electronic equipment throughout the aircraft. The 280-watt voltage converter features a highly-efficient fanless design, saves energy and reduces weight. It can be conveniently mounted in the floor, cabin wall or outside the pressure vessel.

The **TC2000** is the largest True Blue Power® converter. It is ideal for aircraft with AC electrical systems that require 28-volt DC power. The TC2000 delivers 2,000 watts of power to in-flight entertainment systems, interior and exterior lighting and USB chargers. Just one TC2000 can power more than 100 single True Blue Power TA202 Series USB charging ports.

| MODEL NO. | PART NO. | CONFIGURATION | LIST PRICE |
|-----------|-----------|---|------------|
| TC280 | 6430280-1 | 280 watts, 115 VAC / 350–800 Hz input, 28 VDC output (10A) | \$3,527 |
| TC2000 | 6432001-1 | 2,000 watts, 100–250 VAC / 47–800 Hz input, 28 VDC output (21A) | \$15,105 |

RELATED PRODUCTS

In-seat, cabin and cockpit USB Power

Single and dual port Lighted and non-lighted USB-A, USB-C and USB-C PD (Page 48)



6430360-31

Course Deviation Indicators

CDIs for Avidyne, BendixKing (Honeywell), Collins, Garmin and Trig Avionics

Mid-Continent Instruments and Avionics

The MD200 Series sets the standard for navigation instruments that are significantly more reliable, longer lasting and easier to read. The MD200 Series is the preferred replacement for the Collins Micro Line IND 350 Series and replaces the BendixKing KI 206.

These CDIs feature new-generation rectilinear meter movements for more accurate readings, plus a course selector and resolver output. The MD200 Series can be configured for 14V or 28V installations.



MD200-706
(3-inch)

GTN 600/700 SERIES, CNX80, GX50/60, GNS 400/500 SERIES, IFD 440/540

| PART NO. | CONFIGURATION | LIST PRICE |
|------------|---|------------|
| MD200-606 | 3-inch, L/R, Glideslope with annunciators | \$2,958 |
| MD200-706 | 3-inch, L/R, Glideslope with annunciators | \$3,196 |
| MD200-707* | 3-inch, L/R, Glideslope with annunciators, Course datum | \$3,502 |
| MD222-406* | 2-inch, L/R, Glideslope with annunciators, LED lighting, VLOC | \$4,100 |

* Models available with course selector resolver output



MD222-406
(2-inch)

GNS 400/500 SERIES, GTN 600/700 SERIES

| PART NO. | CONFIGURATION | LIST PRICE |
|------------|---|------------|
| MD222-406* | 2-inch, L/R, Glideslope with annunciators, LED lighting, VLOC | \$4,100 |

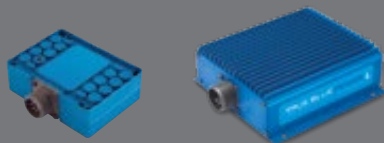
* Models available with course selector resolver output



Northrup Grumman MQ-4C Triton

Standard Equipment

True Blue Power® TC120 DC-to-DC Voltage Converter
True Blue Power® TI254 DC-to-AC Inverter



Directional Gyros



3300-10

Directional Gyros, Electric

Mid-Continent Instruments and Avionics

Mechanical gyros still serve an important role in many aircraft. Electric gyros offer far greater reliability and service life compared to vacuum gyros.

Advanced circuitry and improved design allow these directional gyros to withstand high vibration and require less than half the power of standard directional gyros. Lightweight (1.8 lbs.) and reliable, these units utilize long-life LEDs for a crisp, legible backlit display, and with 10–32 volt DC input, they will work in any aircraft. Exceptional RTCA DO-160E HIRF immunity makes this an ideal replacement for heavy, older AIM and RC Allen units.

| PART NO. | CONFIGURATION | LIST PRICE |
|----------|-------------------------|------------|
| 3300-10 | 10–32 VDC | \$4,457 |
| 3300-11 | 10–32 VDC, LED lighting | \$4,894 |



4000B-31

Directional Gyros, Air

Sigma-Tek

Sigma-Tek air-driven directional gyros are widely used in general aviation aircraft. Available options include autopilot interface, heading reference and lighting variations.

| MODEL NO. | CONFIGURATION | LIST PRICE |
|-----------------|----------------------------|------------|
| 4000B-30 | Standard | \$2,099 |
| 4000B-31* | Lighted | \$2,505 |
| 4000C/52D54 | Autopilot, 52D54 | \$3,894 |
| 4000C-1/52D54M* | Autopilot, 52D54M, Lighted | \$4,239 |
| 4000HR-2 | Heading reference | \$2,615 |

* Specify lighting voltage and type (LED or incandescent) when ordering



4000HR-2



4000C-1/52D54M



4000C/52D54



Robinson R44 Raven II

| | |
|--------------------|--|
| Custom Design | MD210 Engine Cluster |
| | MD209 Engine Cluster |
| | MD206 Dual Tachometer |
| Standard Equipment | True Blue Power® TB17 Aircraft Battery |
| STC Approved | True Blue Power® TB17 Aircraft Battery |
| Accessory | True Blue Power® TA202 Series USB Chargers |
| | True Blue Power® Pro Battery Charger |



Emergency Battery Power Supplies



Emergency Battery Power Supplies True Blue Power®

Provide reliable emergency power to critical flight equipment in the event of primary power loss.



The **TS6** is compatible with Mid-Continent Instruments and Avionics 2-inch digital instruments, the Flex® Custom Function Display, and avionics or components that require 28 VDC input.



The **TS28** is designed to provide power to emergency lighting on Citation 550, 560, 650, 680, 680A and 700 aircraft. It is a direct replacement for Radiant Battery Power Supplies CBS28-1.

| MODEL NO. | PART NO. | CONFIGURATION | LIST PRICE |
|-----------|--------------|--|---------------------------------|
| TS6 | 6430006-1 | 24 VDC, 0.25 A, 6 watt, DB9 connector | \$582 |
| TS28 | 6430028-1 | 24 VDC, 1 A, 6 watt, 4-pin circular connector | \$4,500 |
| TS60 | 6430060-1 | 6.6 VDC, 28 watt, Bayonet connector | NEW Lower Price! \$3,900 |
| TS60 | 6430060-2 | 6.6 VDC, 28 watt, Threaded connector | NEW Lower Price! \$3,900 |
| TS60 | 6430060-3 | 6.6 VDC, 43 watt, Bayonet connector | NEW Lower Price! \$4,500 |
| TS60 | 6430060-4 | 6.6 VDC, 43 watt, Threaded connector | NEW Lower Price! \$4,500 |
| TS835 | MD835-1 | 24.5 VDC, 4.5 Ah, 20 amp fuse | \$5,712 |
| TS835 | MD835-3 | 24.5 VDC, 4.5 Ah, 15 amp fuse (Airbus Helicopters) | \$5,712 |
| TS835 | MD835-5 | 24.5 VDC primary output, 5 VDC auxiliary output, 4.5 Ah, 20 amp fuse | \$6,981 |
| | 5120-107-C01 | Mounting rack (TS835 Series) | \$800 |
| | 9016600-2 | Connector (TS835 Series) | \$351 |
| | 9017176 | Cockpit self-test switch (TS835 Series) | \$1,067 |
| | 9017983 | Vent tube kit (optional) (TS835 Series) | \$379 |
| | 9019931 | Replacement battery pack (TS28) | \$1,200 |



TS60

Direct replacement
for Honeywell Grimes
60-3844 and 60-5025
power supplies

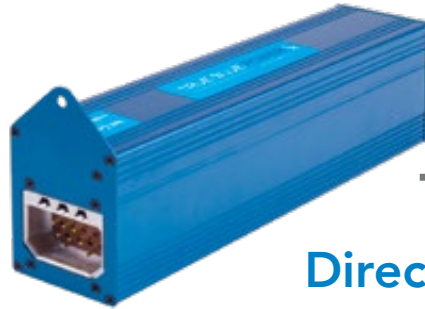
The **TS60 Series** lithium-ion emergency battery power supply provides constant 6.6 VDC power to emergency lighting systems in the event of electrical system failure.

An in-house capacity check is only required every 2 years and no special equipment is needed for installation, testing or charging. This significantly reduces maintenance cost.

The TS60 is highly-dependable and is the first lithium-ion emergency battery power supply to meet the rigorous TSO C179b requirements. The 43-watt TS60 offers extended life compared to the 28-watt variation.



The **TS835 Series** emergency battery power supply delivers 24.5 VDC (5 VDC optional) power for critical and standby equipment. Offering significant advantages over older, lead-acid designs, the TS835 provides a 63% weight savings, reduced maintenance costs and improved life expectancy. It is STC approved on more than 100 aircraft models.



TS835
Direct replacement
for J.E.T. PS-835 and PS-855

© Textron Aviation Inc. - All rights reserved, used by permission.



Cessna Citation Longitude

Standard Equipment

True Blue Power® TC351 Converter
True Blue Power® TI1502 Inverter
True Blue Power® TB44 Aircraft Battery

Accessory

True Blue Power® Pro Battery Charger



Emergency Locator Transmitters



Emergency Locator Transmitters

Kannad Aviation

Mid-Continent is an authorized dealer and service center for Kannad Aviation, offering repair, warranty repair and warranty replacement services for Kannad Aviation emergency locator transmitters (ELT).

Whether outfitting an aircraft with an ELT is mandated or preferred, installing an emergency beacon that will activate automatically in the event of an emergency is critical to ensuring the long-term safety of the crew.

| PART NO. | CONFIGURATION | LIST PRICE |
|-------------|-------------------|------------|
| S1851501-02 | ELT, Integra AF | \$1,352 |
| S1852501-02 | ELT, Integra AF-H | \$1,545 |



© Diamond Aircraft Industries - All rights reserved, used by permission.

Diamond DA50 RG

Standard Equipment | True Blue Power® TA202 Series USB Chargers
SAM® MD302 Standby Attitude Module





AVIATION IN YOUR LANGUAGE

Adams Aviation Supply Company Limited is the European Distributor for
Mid-Continent Instruments and Avionics & True Blue Power products.



**Adams
Aviation**

Telephone +44 (0)1293 459 645
AOG Line +44 (0)1689 808 979
www.adamsaviation.com

FLEX[®]

Streamline the product development process, save hundreds of thousands of dollars in NRE and certification costs, and compress your project timeline. Go from concept to cockpit in 30 days, without breaking the bank.



Your custom display in half the time, at half the cost.

EXPECT **FAST** EXPECT **EASY** EXPECT **AFFORDABLE**



Learn more

MidContinent[®]
INSTRUMENTS+AVIONICS

Flex® Custom Function Displays

Flex® Custom Function Displays, 2-inch, Digital Mid-Continent Instruments and Avionics

A controller, data converter and custom display, all-in-one.

Bring new data to the cockpit or replace your aging instruments in **half the time, at half the cost**. The FAA TSO certified Flex® simplifies avionics systems integration through customizable data parameters, user interface and high-resolution graphics. Night Vision Imaging System (NVIS) compatible versions are available.

The Flex® 6430023-3 features an Attitude and Heading Reference System (AHRS) and delivers pitch and roll output via ARINC 429, without any additional equipment. Heading is available when paired with the MD32 Magnetometer.



Flex® MD23



Remote Magnetometer (Page 41)

MD32

Rechargeable and field-replaceable
Emergency Battery Power Supply (Page 30)



TS6

| MODEL NO. | PART NO. | CONFIGURATION | LIST PRICE |
|-----------|-----------|--|-------------|
| Flex MD23 | 6420023-1 | 2-inch, Custom programmable, Multi I/O, Frequency inputs, LCD | Please call |
| Flex MD23 | 6420023-2 | 2-inch, Custom programmable, Multi I/O, Pitot and static ports, LCD | Please call |
| Flex MD23 | 6420023-3 | 2-inch, Custom programmable, Multi I/O, Solid-state MEMS gyro and accelerometer, LCD | Please call |

Base MD23 units are available without a preloaded Custom Instrument Definition (CID)



AVAILABLE FOR PURCHASE FROM AVIONICS RETAILERS.
Pricing and availability are subject to change without notice.

STC APPROVED

4000 WATT
AC-to-AC
FREQUENCY
CONVERTER



Gulfstream

G450 / G550 / G650 / G650ER



TFC4000

DROP-IN REPLACEMENT

Frequency Converters, Ground Power Units



Frequency Converter True Blue Power®

Quiet your cabin and cut replacement costs with the TFC4000. **Weighing only 19 pounds, it's the lightest and quietest frequency converter in its power class.** You'll gain more useful load and access to up to 4,000 watts of wall outlet power. This AC-to-AC frequency converter is easy to install in tight, hard-to-reach spaces. It is a drop-in replacement for the **GE 717220-1, 717220-2, 717220-2R, and Avionic Instruments LLC converter 1-002-0102-2444, 1-002-0102-2052.**



TFC4000

| MODEL NO. | PART NO. | CONFIGURATION | LIST PRICE |
|-----------|-----------|---|------------|
| TFC4000 | 6434000-1 | 4 kVA, 115 VAC, 3-phase, 360-800 Hz input, 115 VAC, 1-phase, 60 Hz output | \$35,000 |

STARTSTICK

Ground Power Units (GPU) Aviation Battery Systems

Compatible, lightweight, safe and convenient. StartStick® is the most advanced, portable ground power unit on the market. The stowable, cable-less design is engineered to be durable and long lasting. Its NanoPhosphate® lithium-ion cell chemistry delivers high power in a safe, rugged and convenient package.



100155



100156

| MODEL NO. | PART NO. | CONFIGURATION | LIST PRICE |
|---------------|----------|---|------------|
| StartStick 10 | 100154 | Lithium-ion powered, 10 amp-hour capacity, portable | \$3,499 |
| StartStick 15 | 100155 | Lithium-ion powered, 15 amp-hour capacity, portable | \$4,499 |
| StartStick 20 | 100156 | Lithium-ion powered, 20 amp-hour capacity, portable | \$5,499 |
| | 100230 | StartStick 10 Bag | \$199 |
| | 100231 | StartStick 15 Bag | \$199 |
| | 100232 | StartStick 20 Hard case | \$399 |
| | 100299 | StartStick, Multi-purpose adapter | \$675 |
| | 100390 | StartStick, Power adapter, 3.5 amp, 100 watt | \$189 |
| | 100300 | StartStick, 24-inch Extension cable | \$675 |
| | 100298 | StartStick, Load relief strap | \$99 |

Please call for wall chargers with international plugs

ELECTRICAL **POWER** *SYSTEMS*



USB Chargers Inverters AC Outlets

Voltage Converters Frequency Converters

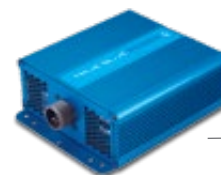
Inverters, DC-to-AC

True Blue Power®

The **TI10** inverter provides a reliable source of 26-volt, 400 Hz AC power. The voltage and frequency of its pure sine wave output remains stable regardless of input fluctuations.

The **TI250 Series** is a highly-efficient inverter that produces **250 watts** of power from the aircraft's 28 VDC input. Engineered to run cooler and featuring a fanless design, the TI250 saves energy and reduces weight.

The **TI500** inverter produces **500 watts of wall-outlet power** from the aircraft's 28 VDC input. Lighter and 30% smaller than competing inverters, the TI500 has the same connector and footprint as legacy designs and features overload and short-circuit protection up to 150% of the rated load.



TI500
Direct replacement
for KGS SS50

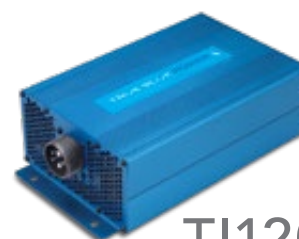
| MODEL NO. | PART NO. | CONFIGURATION | LIST PRICE |
|-----------|-----------|--|-------------|
| TI10* | MD26-28 | 10 VA, 11–40 VDC input, 26 VAC output, 400 Hz, Sine wave | \$769 |
| TI250 | 6430250-1 | 250 VA, 20–36 VDC input, 115 VAC output, 60 Hz, Sine wave | \$3,425 |
| TI254 | 6430250-2 | 250 VA, 20–36 VDC input, 115 VAC output, 400 Hz, Sine wave | \$3,425 |
| TI256 | 6430250-3 | 250 VA, 20–36 VDC input, 115/26 VAC output, 400 Hz, Sine wave | \$4,615 |
| TI500 | MD50 | 500 VA, 20–36 VDC input, 115 VAC output, 60 Hz, Sine wave | \$4,990 |
| TI1200 | 6431200-1 | 1,200 VA, 20–36 VDC input, 115 VAC output, 60 Hz, Sine wave | \$7,485 |
| TI1202 | 6431200-3 | 1,200 VA, 20–36 VDC input, 230 VAC output, 50 Hz, Sine wave | \$7,815 |
| TI1202 | 6431200-5 | 600 VA, 20–36 VDC input, 230 VAC output, 50 Hz, Sine wave | \$8,896 |
| TI1202 | 6431200-8 | 1,200 VA, 20–36 VDC input, 240 VAC output, 50 Hz, Sine wave | \$7,815 |
| TI1204 | 6431200-7 | 1,200 VA, 20–36 VDC input, 115 VAC output, 400 Hz, Sine wave | \$15,876 |
| TI1502* | 6431502-1 | 1,500 VA, 18–32 VDC input, 30–120 VAC output, 60 Hz, Square wave | Please call |
| TI2000 | 6432000-1 | 2,000 VA, 20–36 VDC input, 115 VAC output, 60 Hz, Sine wave | \$15,514 |
| TI2002 | 6432000-2 | 2,000 VA, 20–36 VDC input, 230 VAC output, 50 Hz, Sine wave | \$16,459 |
| TI2004 | 6432000-4 | 2,000 VA, 20–36 VDC input, 115 VAC output, 400 Hz, Sine wave | \$15,675 |

* Not FAA TSO certified

The **TI1200 Series** inverter supplies **1,200 watts** of power to a variety of cabin accessories, galley equipment, avionics, entertainment and aircraft systems. The compact TI1200 Series has the same connector and footprint as legacy designs, plus overload and short-circuit protection up to 150% of the rated load.

The **TI2000 Series** inverter delivers **2,000 watts** of power from the aircraft's 28 VDC system to cabin and galley accessories. Ideal for entertainment systems, personal electronic devices, microwave ovens and high-powered coffee makers, the TI2000 is smaller, lighter and more efficient than the nearest competition.

The **TI2004** inverter can be interconnected in a three-phase configuration to produce **6,000 watts** of power.



TI1200
Direct replacement
for KGS SS120

RELATED PRODUCTS

Outlets, AC (Page 43)

| PART NO. | CONFIGURATION | LIST PRICE |
|-----------|---|------------|
| 9018708-1 | 115V, AC, Three Prong | \$484 |
| 9018708-2 | 115–230V, AC, Universal | \$484 |
| 9018708-3 | 115V, AC, Three Prong, no Pigtail | \$484 |
| 9018708-4 | 115–230V, AC, Universal, no Pigtail | \$484 |
| 7430004-1 | STC Kit, Boeing 737, TI250, 2 North American AC outlets | \$11,731 |
| 7430004-2 | STC Kit, Boeing 737, TI250, 2 Universal AC outlets | \$11,731 |



9018708-1



9018708-2

Light Trays



9015640-2



9016909-14



9016909



6015358-()

Light Trays

Mid-Continent Instruments and Avionics

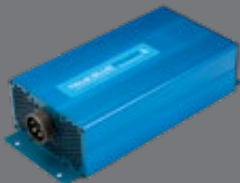
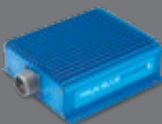
| PART NO. | CONFIGURATION | LIST PRICE |
|------------|---|------------|
| MD31-6 | 2-inch, 5V, LED | \$123 |
| MD31-5 | 2-inch, 5V, LED, Connector | \$131 |
| MD31-4 | 2-inch, 14V, LED | \$123 |
| MD31-3 | 2-inch, 14V, LED, Connector | \$134 |
| MD31 | 2-inch, 28V, LED | \$123 |
| MD31-2 | 2-inch, 28V, LED | \$123 |
| MD31-1 | 2-inch, 28V, LED, Connector | \$134 |
| 9015640-1 | 3-inch, 5V, Incandescent (4300 Series) | \$123 |
| 9016909-5 | 3-inch, 5V, LED (4300 Series) | \$123 |
| 9015640-10 | 3-inch, 5V, NVIS (4300 Series) | \$674 |
| 9015640-2 | 3-inch, 14V, Incandescent (4300 Series) | \$123 |
| 9016909-14 | 3-inch, 14V, LED (4300 Series) | \$123 |
| 9015640-3 | 3-inch, 28V, Incandescent (4300 Series) | \$123 |
| 7016637 | 3-inch, 28V, Incandescent, Connector (Cessna) | \$177 |
| 9016909 | 3-inch, 28V, LED (4300 Series) | \$123 |
| 9015640-12 | 3-inch, 28V, NVIS (4300 Series) | \$674 |
| 6018634-() | 2-inch or 3-inch, 5V, Incandescent | \$135 |
| 6015010-() | 2-inch or 3-inch, 14V, Incandescent | \$135 |
| 6015358-() | 2-inch or 3-inch, 28V, Incandescent | \$135 |



Boeing 737

STC Approved

True Blue Power® AC Outlet
True Blue Power® TA202 Series USB Chargers
True Blue Power® TI250 Series Inverter
True Blue Power® TC2000 Converter

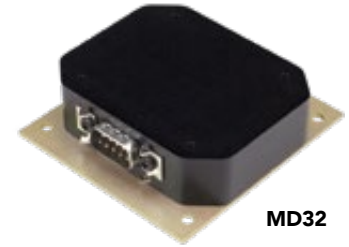


Magnetometers, Manifold Pressure Gauges

Magnetometers

Mid-Continent Instruments and Avionics

The MD32 Magnetometer is designed specifically for the Standby Attitude Module (SAM®) MD302, Flex® MD23-3 and Digital Attitude Indicator MD23-342. It delivers independent heading reference without the need for special installation hardware or orientation limitations. This magnetometer's unique mounting flexibility, compact size and convenient cockpit calibration ensure easy, low-cost installation.



MD32

| MODEL NO. | PART NO. | CONFIGURATION | LIST PRICE |
|-----------|-----------|---|------------|
| MD32 | 6420032-1 | Remote magnetometer, 7–32 VDC, ARINC 429 output (For SAM MD302, Flex MD23-3 and Digital Attitude Indicator MD23-342) | \$1,569 |

Manifold Pressure Gauges

United Instruments

Engineered for durability, these pressure gauges utilize an internal bellows system to measure the absolute pressure of the aircraft engine intake in inches.

| PART NO. | CONFIGURATION | LIST PRICE |
|-----------|---|------------|
| 6111-D.17 | 10–35 Hg, Single scale (without markings) | \$1,659 |
| 6121-E.58 | 10–35 Hg, Dual scale (without markings) | \$2,580 |
| 6111-D.16 | 10–50 Hg, Single scale (without markings) | \$1,659 |
| 6121-E.57 | 10–50 Hg, Dual scale (without markings) | \$2,580 |
| 6112-D.15 | 10–75 Hg, Single scale (without markings) | \$1,659 |
| 6122-E.56 | 10–75 Hg, Dual scale (without markings) | \$2,580 |



6121-E.57



NAV / COM Radios



NAV / COM Radios

BendixKing (Honeywell)

The new BendixKing KX 200 NAV/COM Radio is an easy-to-install, direct replacement for your current KX 155/165 radio and can substitute other radios using the same tray and connector. The KX 200 is pilot friendly, featuring a high-resolution color LCD, 50-channel memory presets, and is compatible with 14- and 28-volt systems.

| PART NO. | CONFIGURATION | LIST PRICE |
|----------------|---|------------|
| 89000002-120* | KX 200 NAV/COM with GS complete kit, including radio and voltage adapter (14V or 28V) NEW EXCHANGE for KX 155 Core | \$5,200 |
| 89000002-120* | KX 200 NAV/COM with GS complete kit, including radio and voltage adapter (14V or 28V) | \$5,455 |
| 89000002-121 | KX 200 Retrofit adapter NAV/COM with GS, 28V (adapter only) | \$530 |
| 89000002-122 | KX 200 Retrofit adapter NAV/COM with GS, 14V (adapter only) | \$530 |
| 050-01778-0000 | KX0155 Install kit with GS crimp* | \$763 |
| 050-01778-0001 | KX0155 Install kit crimp* | \$710 |

* When ordering, please indicate whether a 14V or 28V adapter is required.

© Cirrus Aircraft - All rights reserved, used by permission.



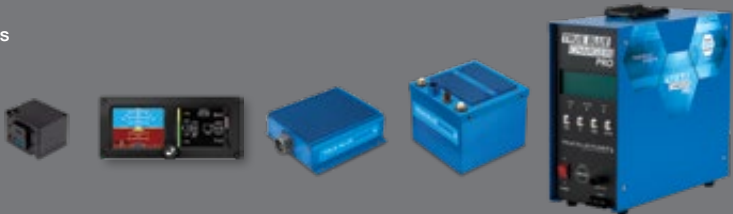
Cirrus G2 Vision Jet

Standard Equipment

- True Blue Power® TA202 Series USB Chargers
- SAM® MD302 Standby Attitude Module
- True Blue Power® TI250 Inverter
- True Blue Power® TB17 Aircraft Battery

Accessory

- True Blue Power® Pro Battery Charger



Outlets, Radars, Remote Relay Units

Outlets, AC True Blue Power®

True Blue Power® AC outlets provide pilots, passengers and crew members with convenient access to power. The three-prong, North American outlet and the Universal outlet can be easily mounted in the cockpit, cabin and galley. Both versions are rated up to 15 amps of power. They are compatible with all True Blue Power inverters.

| PART NO. | CONFIGURATION | LIST PRICE |
|------------|---|------------|
| 9018708-1 | 115V, AC, Three Prong | \$484 |
| 9018708-2 | 115–230V, AC, Universal | \$484 |
| 9018708-3* | 115V, AC, Three Prong, no Pigtail | \$484 |
| 9018708-4* | 115–230V, AC, Universal, no Pigtail | \$484 |
| 7430004-1 | STC Kit, Boeing 737, T1250, 2 North American AC outlets | \$11,731 |
| 7430004-2 | STC Kit, Boeing 737, T1250, 2 Universal AC outlets | \$11,731 |

* Not FAA PMA approved



9018708-1



9018708-2

Radars Ontic

Utilizing the latest technology, Ontic's digital weather radar systems deliver an accurate, vertical image of a storm and provide the best view available to the pilot to accurately determine its scope.



ART 2000

| MODEL NO. | PART NO. | CONFIGURATION | LIST PRICE |
|-----------|----------------|---|-------------|
| ART 2000 | 071-01519-0101 | Digital weather radar system, Radar transceiver, 4.0 kW | Please call |
| ART 2100 | 071-01550-0101 | Digital weather radar system, Radar transceiver, 6.0 kW | Please call |
| RDR 2060 | 071-01550-0201 | Digital weather radar system, Radar transceiver, 6.0 kW | Please call |

Remote Relay Units

Mid-Continent Instruments and Avionics

These remote-mounted, 24-pole units feature eight nitrogen-filled relays (3 poles per relay) with gold-plated contacts. Ideal for GPS/VOR transfer and audio switching applications, these remote relay units provide unequalled integrity with fail-safe fault monitoring through interlocking of all internal relays.

| PART NO. | CONFIGURATION | LIST PRICE |
|----------|-------------------|------------|
| MD41-244 | 24-pole, 14V, TSO | \$1,465 |
| MD41-248 | 24-pole, 28V, TSO | \$1,465 |



MD41-248

500+ STC
Aircraft Models

SAVE SPACE **SAVE TIME** **SAVE THE DAY**

2-inch Standby Attitude Module

Maximize your panel space and fly with the only 2-inch, digital standby that can be installed horizontally and vertically to fit in the tightest spaces. With SAM, you won't waste time on unreliable equipment and complicated installations, and a rechargeable, internal battery saves the day in the event of electrical failure. You'll have one hour of emergency power and the critical time you need to land safely.

SAM® YOU GOTTA HAVE IT!



Standby Attitude Modules

SAM® Standby Attitude Modules, 2-inch, Digital Mid-Continent Instruments and Avionics

Fly with the only digital standby that can be installed horizontally or vertically to fit in the tightest spaces. SAM® is the first certified standby to display attitude, altitude, airspeed, vertical trend, heading and slip information in a flexible 2-inch format. Fly SAM. Land safe.

Available with FAA-certified lithium-ion or nickel-metal hydride emergency battery and customizable to add SSEC for RVSM. Night Vision Imaging System (NVIS) compatible versions are available. Please call for a quote.



selectable
orientation



field
upgradeable
software



emergency
battery

| MODEL NO. | PART NO. | CONFIGURATION | LIST PRICE |
|-----------|-----------|--|------------|
| SAM MD302 | 6420302-1 | Digital, 10–32 VDC, Attitude, Altitude, Airspeed, Slip, Black bezel, Lithium-ion battery | \$11,240 |
| SAM MD302 | 6420302-7 | Digital, 10–32 VDC, Attitude, Altitude, Airspeed, Slip, Black bezel, NiMH battery | \$11,240 |
| SAM MD302 | 6420302-2 | Digital, 10–32 VDC, Attitude, Altitude, Airspeed, Slip, Black bezel, (Without battery) | \$11,240 |
| SAM MD302 | 6420302-4 | Digital, 10–32 VDC, Attitude, Altitude, Airspeed, Slip, Gray bezel, Lithium-ion battery | \$11,240 |
| SAM MD302 | 6420302-6 | Digital, 10–32 VDC, Attitude, Altitude, Airspeed, Slip, Black bezel, (For Cirrus SR) | \$11,240 |
| SAM MD302 | 6420302-8 | Digital, 10–32 VDC, Attitude, Altitude, Airspeed, Slip, Gray bezel, NiMH battery | \$11,240 |
| SAM MD302 | 6420302-5 | Digital, 10–32 VDC, Attitude, Altitude, Airspeed, Slip, Gray bezel, (Without battery) | \$11,240 |
| SAM MD302 | 6420302-3 | No display, 10–32 VDC, Remote mounted, ARINC output, (Without battery) | \$11,240 |
| | 9017177 | Battery pack, Lithium-ion | \$482 |
| | 9019120-1 | Battery pack, NiMH | \$606 |
| | 9017146* | Pitot-static O-ring | \$4 |

* Included with purchase of SAM® standby attitude modules

RELATED PRODUCTS

SAM® is even smarter!

The MD32 Magnetometer, designed specifically for SAM®, delivers independent heading reference. Its unique mounting flexibility, compact size and convenient cockpit calibration ensures an easy, low-cost installation.



MD32 Remote
Magnetometer
(Page 41)

Transponders, Turn and Slip Indicators



KGX-150R

Transponders

BendixKing (Honeywell)

BendixKing transponders ensure the visibility of your aircraft now, and into the future. Designed to perform under the most extreme conditions, units are available to meet global mandates for ADS-B compliance.

| MODEL NO. | PART NO. | CONFIGURATION | LIST PRICE |
|-----------|--------------|--|-------------|
| KGX-130R | 89000016-131 | Receiver, ADS-B in/out, Remote, w/o GPS (KT 76) | Please call |
| KGX-150R | 89000016-150 | Receiver, WAAS GPS/UAT, ADS-B in/out, Remote (KT 76) | Please call |



5550-8340N5L

Turn and Slip Indicators, 2-inch

Mid-Continent Instruments and Avionics / General Design

Widely used as standard equipment in the turboprop market, these dependable 2-inch units fit into the tightest panel space. AC brushless rotors offer great reliability.

| PART NO. | CONFIGURATION | LIST PRICE |
|----------------|------------------|------------|
| 5550-8340N5L | 28V, Lighted | \$4,113 |
| MS3106A10SL-3S | Connector, 3-pin | \$99 |



1234T100-7TZ

Turn and Slip Indicators, 3-inch

Mid-Continent Instruments and Avionics

Proven reliability through HALT testing and OEM use since 1999, it's hard to beat these indicators. With more than one million units produced, they are the choice of more than 15 aircraft companies.

| PART NO. | CONFIGURATION | LIST PRICE |
|----------------|------------------|------------|
| 1234T100-7TZ | 12-32V | \$2,994 |
| 1234T100-3TZ* | 12-32V, Lighted | \$2,994 |
| MS3106A10SL-3S | Connector, 3-pin | \$99 |

* Specify lighting voltage and type (LED or incandescent) when ordering

Turn Coordinators

Turn Coordinators, 3-inch

Mid-Continent Instruments and Avionics

Engineered for a long service life, the “B” model turn coordinators feature a proven AC rotor powered by a solid-state inverter, creating less heat behind the panel. Utilizing a brushless rotor design, these instruments have top industry ratings of 4,800 hours MTBF. As a direct replacement for most 3-pin turn coordinators, these units are ideal for use in high-performance aircraft and cold-climate applications. All 3-inch turn coordinators operate from 11–32 volts DC for convenience and reliability.

| PART NO. | CONFIGURATION | LIST PRICE |
|----------------|---|------------|
| 1394T100-7B | 11–32V, Brushless | \$1,673 |
| 1394T100-3B* | 11–32V, Brushless, Lighted | \$2,015 |
| 1394T100-7RB | 11–32V, Autopilot, Brushless, ARC | \$2,938 |
| 1394T100-10RB* | 11–32V, Autopilot, Brushless, KAP 140, Lighted, High wing | \$3,137 |
| 1394T100-12RB* | 11–32V, Autopilot, Brushless, KAP 140, Lighted | \$3,137 |
| 1394T100-14RB* | 11–32V, Autopilot, Brushless, S-TEC, Lighted | \$3,137 |
| MS3106A10SL-3S | Connector, 3-pin | \$99 |
| MS3106A14S-5S | Connector, 5-pin, Autopilot | \$96 |



1394T100-7B

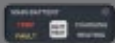
* Specify lighting voltage and type (LED or incandescent) when ordering



Bell 206L

STC Approved | MD41-1817 Lithium-Ion Battery ACU
True Blue Power® TB17 Aircraft Battery

Accessory | True Blue Power® Pro Battery Charger



USB Chargers



USB Chargers True Blue Power®

High Power — Up to 15 watts per port

Pilots and passengers stay charged and connected with high power **TA202 Series** chargers. Single and dual USB-A and USB-C configurations leave a small footprint in the panel or cabin wall. The easy-to-install design requires no external power converters for 10–32 VDC applications. *USB connector kit included with purchase of all USB chargers. Complete list of accessories, page 51.*



USB-A



USB-C



USB-A / USB-A



USB-C / USB-C



USB-C / USB-A

Single Port, High Power

15 watts

3 amps per port

\$211/ea

| MODEL NO. | PART NO. | CONFIGURATION |
|-----------|------------|--|
| TA202 | 6430202-9 | USB-A, 10–32 VDC in, Rear connector |
| TA202 | 6430202-19 | USB-A, 10–32 VDC in, Rear connector, Lighted |
| TA202 | 6430202-10 | USB-A, 10–32 VDC in, Bottom connector |
| TA202 | 6430202-20 | USB-A, 10–32 VDC in, Bottom connector, Lighted |
| TA202 | 6430202-7 | USB-C, 10–32 VDC in, Rear connector |
| TA202 | 6430202-17 | USB-C, 10–32 VDC in, Rear connector, Lighted |
| TA202 | 6430202-8 | USB-C, 10–32 VDC in, Bottom connector |
| TA202 | 6430202-18 | USB-C, 10–32 VDC in, Bottom connector, Lighted |

Dual Port, High Power

15 watts / 15 watts

3 amps per port

\$423/ea

| MODEL NO. | PART NO. | CONFIGURATION |
|-----------|------------|--|
| TA202 | 6430202-5 | USB-A, 10–32 VDC in, Rear connector |
| TA202 | 6430202-15 | USB-A, 10–32 VDC in, Rear connector, Lighted |
| TA202 | 6430202-6 | USB-A, 10–32 VDC in, Bottom connector |
| TA202 | 6430202-16 | USB-A, 10–32 VDC in, Bottom connector, Lighted |
| TA202 | 6430202-3 | USB-C, 10–32 VDC in, Rear connector |
| TA202 | 6430202-13 | USB-C, 10–32 VDC in, Rear connector, Lighted |
| TA202 | 6430202-4 | USB-C, 10–32 VDC in, Bottom connector |
| TA202 | 6430202-14 | USB-C, 10–32 VDC in, Bottom connector, Lighted |
| TA202 | 6430202-1 | USB-C / USB-A, 10–32 VDC in, Rear connector |
| TA202 | 6430202-11 | USB-C / USB-A, 10–32 VDC in, Rear connector, Lighted |
| TA202 | 6430202-2 | USB-C / USB-A, 10–32 VDC in, Bottom connector |
| TA202 | 6430202-12 | USB-C / USB-A, 10–32 VDC in, Bottom connector, Lighted |

USB Chargers True Blue Power®

MAX Power — Up to 100 watts per port



MAX Power TA360 Series chargers feature the latest USB Power Delivery (PD) Technology and intelligent, device-driven voltage output. They provide the maximum power needed for each device and up to 100 watts per PD port — that's **7 times more power** than traditional chargers. MAX chargers are compatible with all USB-C PD, traditional USB-C and USB-A devices. *USB connector kit included with purchase of all USB chargers. Complete list of accessories, page 51.*

Single Port, MAX Power

| 60 watts | | 3 amps per port | \$349/ea |
|-----------|------------|---|-----------------|
| MODEL NO. | PART NO. | CONFIGURATION | |
| TA360 | 6430360-7 | USB-C PD, 22–32 VDC in, Rear connector | |
| TA360 | 6430360-17 | USB-C PD, 22–32 VDC in, Rear connector, Lighted | |
| 100 watts | | 5 amps per port | \$499/ea |
| MODEL NO. | PART NO. | CONFIGURATION | |
| TA360 | 6430360-27 | USB-C PD, 22–32 VDC in, Rear connector | |
| TA360 | 6430360-37 | USB-C PD, 22–32 VDC in, Rear connector, Lighted | |



USB-C PD

Dual Port, MAX Power

| 60 watts / 60 watts | | 3 amps per port | \$698/ea |
|----------------------|------------|---|-----------------|
| MODEL NO. | PART NO. | CONFIGURATION | |
| TA360 | 6430360-3 | USB-C PD, 22–32 VDC in, Rear connector | |
| TA360 | 6430360-13 | USB-C PD, 22–32 VDC in, Rear connector, Lighted | |
| 60 watts / 15 watts | | 3 amps per port | \$548/ea |
| MODEL NO. | PART NO. | CONFIGURATION | |
| TA360 | 6430360-1 | USB-C PD / USB-A, 22–32 VDC in, Rear connector | |
| TA360 | 6430360-11 | USB-C PD / USB-A, 22–32 VDC in, Rear connector, Lighted | |
| 100 watts / 15 watts | | 5 amps per port | \$698/ea |
| MODEL NO. | PART NO. | CONFIGURATION | |
| TA360 | 6430360-21 | USB-C PD / USB-A, 22–32 VDC in, Rear connector | |
| TA360 | 6430360-31 | USB-C PD / USB-A, 22–32 VDC in, Rear connector, Lighted | |



USB-C PD



USB-C PD / USB-A



USB POWER to the **MAX**

The most powerful USB Chargers in aviation



7X MORE
POWER

UP TO **100** WATTS
PER PORT

Upgrade your aircraft to the fastest charging, most powerful USB charging ports in aviation. **MAX Power Chargers** deliver up to 100 watts per port — that's 7 times more power than traditional chargers. The latest Power Delivery (PD) Technology and device-driven voltage output guarantee your electronics get the maximum power they need. You'll lock in the fastest, most efficient charging possible.

True Blue Power offers a complete line of certified in-seat, cabin, cockpit and galley USB chargers. Backed by a Limited Lifetime Warranty, USB power is available in single and dual port, lighted and non-lighted, traditional USB and PD configurations.



Learn more

TRUE BLUE POWER 
A division of Mid-Continent Instrument Co., Inc.

USB Charger Accessories



9010360-1



9010361-1



9010361-4

USB Charger Adapters

| PART NO. | CONFIGURATION | LIST PRICE |
|-----------|---|------------|
| 9010360-1 | Single port, Right angle adapter (TA360 only) | \$165 |
| 9010361-1 | Single Port, Multi-unit DZUS mount adapter, Black | \$165 |
| 9010361-2 | Dual Port, Multi-unit DZUS mount adapter, Black | \$165 |
| 9010361-3 | Single Port, Multi-unit DZUS mount adapter, Gray | \$165 |
| 9010361-4 | Dual Port, Multi-unit DZUS mount adapter, Gray | \$165 |
| 9017947 | Dual port, Instrument adapter plate, Rear mount | \$59 |
| 9019702 | Single port, Beechcraft yoke USB adapter, Rear mount (TA202 only) | \$211 |
| 9019703 | Single port, Cygnet yoke USB adapter, Rear mount (TA202 only) | \$211 |



9017947



9019702

USB Charger Connector Kits

| PART NO. | CONFIGURATION | LIST PRICE |
|----------|-------------------|------------|
| 9017960* | USB Connector kit | \$27 |

* Included with purchase of all USB chargers



9017958

USB Charger Dust Covers

| PART NO. | CONFIGURATION | LIST PRICE |
|-----------|-----------------------|------------|
| 9019313-1 | USB Dust cover, Black | \$5 |
| 9019313-2 | USB Dust cover, Gray | \$5 |



9019384-3

USB Charger Faceplates

| PART NO. | CONFIGURATION | LIST PRICE |
|-----------|--|------------|
| 9019384-3 | Single port, Circular, Rear mount | \$31 |
| 9019351-1 | Single port, Rectangular, Rear mount | \$89 |
| 9019384-4 | Dual port, Circular, Rear mount | \$31 |
| 9017958 | Dual port, Small square, Rear mount | \$89 |
| 9017897 | Dual port, Standard square, Front mount (TA202 only) | \$89 |



9019384-4

Vertical Speed Indicators



7030C.27



7130C.47

Vertical Speed Indicators, 3-inch, Analog

United Instruments

Providing an accurate indication of rate of change in altitude, these versatile vertical speed indicators (VSI) offer several configurations and have been selected as standard equipment by aircraft manufacturers worldwide. IVSI units provide Instantaneous Vertical Speed Indication.

| PART NO. | CONFIGURATION | LIST PRICE |
|------------|----------------------------|------------|
| 7000C.31 | 0–2,000 FPM | \$1,251 |
| 7000C.91* | 0–2,000 FPM, Lighted | \$1,726 |
| 7030C.27 | 0–3,000 FPM | \$1,251 |
| 7030C.99* | 0–3,000 FPM, Lighted | \$1,726 |
| 7040C.28 | 0–4,000 FPM | \$1,251 |
| 7040C.109* | 0–4,000 FPM, Lighted | \$1,726 |
| 7060C.46 | 0–6,000 FPM | \$2,122 |
| 7060C.114* | 0–6,000 FPM, Lighted | \$2,596 |
| 7120C.40 | 0–2,000 FPM, IVSI | \$4,430 |
| 7130C.41 | 0–3,000 FPM, IVSI | \$4,430 |
| 7130C.47* | 0–3,000 FPM, IVSI, Lighted | \$4,903 |
| 7140C.42 | 0–4,000 FPM, IVSI | \$4,430 |
| 7140C.125* | 0–4,000 FPM, IVSI, Lighted | \$4,903 |
| 7160C.43 | 0–6,000 FPM, IVSI | \$5,342 |
| 7160C.130* | 0–6,000 FPM, IVSI, Lighted | \$5,342 |

* Specify lighting voltage and type (LED or incandescent) when ordering



Cessna Caravan

STC Approved | 208 / 208B Series True Blue Power® TB44 Aircraft Battery

Accessory | True Blue Power® Pro Battery Charger



WHERE TO BUY

Mid-Continent Instruments and Avionics and True Blue Power products are available at more than 8,000 avionics dealers, worldwide.



Scan to locate a
Dealer near you

 **MidContinent**[®]
INSTRUMENTS+AVIONICS

TRUE BLUE POWER[®] 
A division of Mid-Continent Instrument Co., Inc.