

LED CABIN LIGHT UPGRADE

KING AIR 200/100/90 SERIES



LED LIGHTING

INTERIOR UPGRADE

UPGRADE YOUR KING AIR WITH LED LIGHTS

PWI's LED Upgrade for the King Air's are the product of innovation and technology combined to reduce weight, reduce the current draw, increase the life span and reliability of the lighting system. The solution is a LED upgrade system that is "fit, form and function" to the present fluorescent system and yet maintains all the lighting characteristics of the existing fluorescent system.

ADVANTAGES OF THE LED UPGRADE SYSTEM:

- » Direct fit, form, and function replacement for the current fluorescent light fixture. (6900080-000) & (6900042-000)
- » Uses existing aircraft wire harness and dimming on/off switches
- » 46% weight reduction per fixture
- » 30% reduction in operating current
- » 40% lower system operating temperatures.
- » Reduced EMI emissions
- » FAA STC # SA1748WI
- » PMA APPROVAL # PQ4159CE
- » EASA STC Pending



REV.	DESCRIPTION	DATE	APPROVED
B	Change per ECH819	3/12/13	W.A.S.
C	Change per ECH846	7/17/13	W.A.S.
D	Change per ECH849	7/19/13	W.A.S.
E	Change per ECH852	8/8/13	W.A.S.
F	Change per ECH853	8/12/13	R.B.
G	Change per ECH856	9/11/13	W.A.S.
H	Change per ECH864	9/23/13	R.B.
J	Change per ECH867	9/24/2013	R.B.
K	Change per ECH868	9/26/2013	R.B.
L	change per ECH879	12/4/2013	W.A.S.

REV.	DESCRIPTION	DATE	APPROVED
B	Change per ECH819	3/12/13	W.A.S.
C	Change per ECH846	7/17/13	W.A.S.
D	Change per ECH849	7/19/13	W.A.S.
E	Change per ECH852	8/8/13	W.A.S.
F	Change per ECH853	8/12/13	R.B.
G	Change per ECH856	9/11/13	W.A.S.
H	Change per ECH864	9/23/13	R.B.
J	Change per ECH867	9/24/2013	R.B.
K	Change per ECH868	9/26/2013	R.B.
L	change per ECH879	12/4/2013	W.A.S.

REV.	DESCRIPTION	DATE	APPROVED
B	Change per ECH819	3/12/13	W.A.S.
C	Change per ECH846	7/17/13	W.A.S.
D	Change per ECH849	7/19/13	W.A.S.
E	Change per ECH852	8/8/13	W.A.S.
F	Change per ECH853	8/12/13	R.B.
G	Change per ECH856	9/11/13	W.A.S.
H	Change per ECH864	9/23/13	R.B.
J	Change per ECH867	9/24/2013	R.B.
K	Change per ECH868	9/26/2013	R.B.
L	change per ECH879	12/4/2013	W.A.S.

REV.	DESCRIPTION	DATE	APPROVED
B	Change per ECH819	3/12/13	W.A.S.
C	Change per ECH846	7/17/13	W.A.S.
D	Change per ECH849	7/19/13	W.A.S.
E	Change per ECH852	8/8/13	W.A.S.
F	Change per ECH853	8/12/13	R.B.
G	Change per ECH856	9/11/13	W.A.S.
H	Change per ECH864	9/23/13	R.B.
J	Change per ECH867	9/24/2013	R.B.
K	Change per ECH868	9/26/2013	R.B.
L	change per ECH879	12/4/2013	W.A.S.

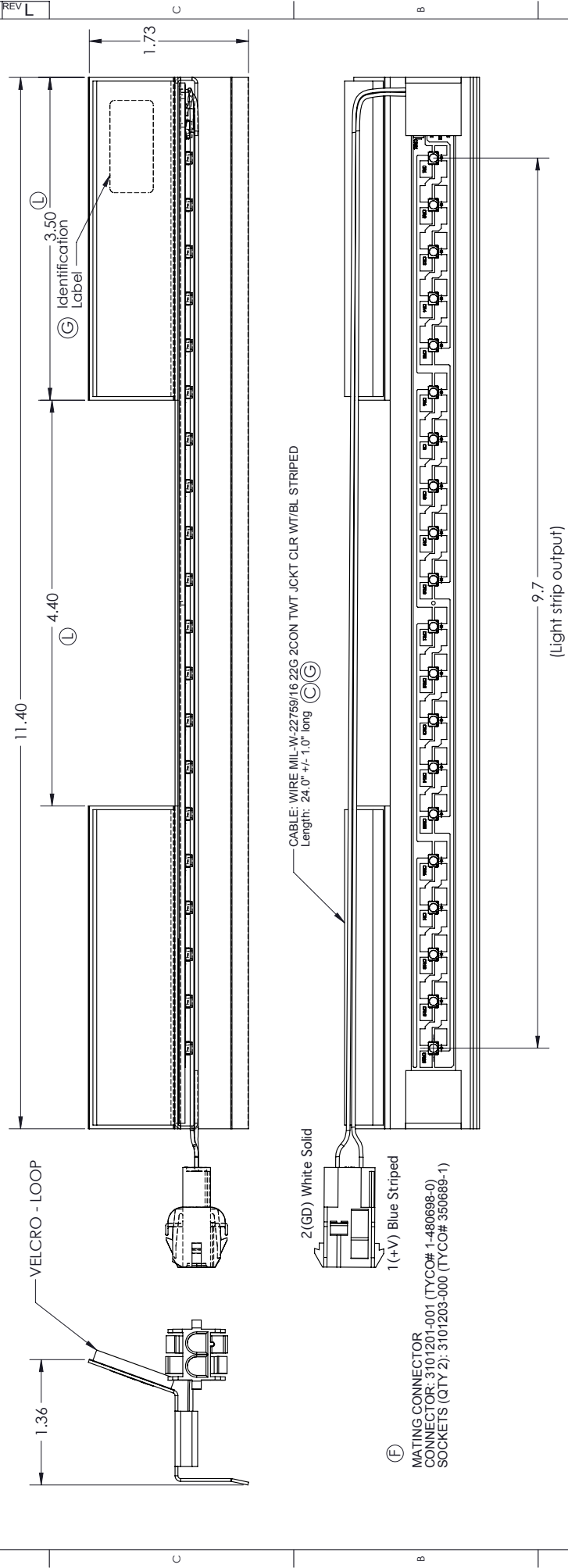
REV.	DESCRIPTION	DATE	APPROVED
B	Change per ECH819	3/12/13	W.A.S.
C	Change per ECH846	7/17/13	W.A.S.
D	Change per ECH849	7/19/13	W.A.S.
E	Change per ECH852	8/8/13	W.A.S.
F	Change per ECH853	8/12/13	R.B.
G	Change per ECH856	9/11/13	W.A.S.
H	Change per ECH864	9/23/13	R.B.
J	Change per ECH867	9/24/2013	R.B.
K	Change per ECH868	9/26/2013	R.B.
L	change per ECH879	12/4/2013	W.A.S.

PROPRIETARY INFORMATION
THE FURNISHING OF THIS DOCUMENT DOES NOT CONVEY ANY REPRODUCTION OR MFG. RIGHTS.

ENG-RELEASED ER150

6/28/13 W.A.S.

DWG No. 6910080-000
SHT 1 OF 2
REV L



SPECIFICATIONS	MIN.	TYP	MAX.	UNITS
INPUT VOLTAGE DC	17	28	32	VDC
INPUT CURRENT DC	188	124	110	MA
WEIGHT		2.59		OZ.
OPERATING TEMPERATURE	-20±		+55±	±C

109 S. KNIGHT
WICHITA, KANSAS 67213
TEL: 316-942-2811 FAX: 316-942-6209

KAR200 LIGHT ASSEMBLY

33497 CAGE CODE DRAWING NO. **6910080-000** REV **L**

SCALE **1:1** EST. WGT **Weight** SHEET **1** OF **2**

UNLESS OTHERWISE SPECIFIED DIM ARE IN INCHES TOL ON ANGLES ± .25° 3 PL ± .010" 4 PL ± .0005" INTERPRET DIM AND TOL PER ASME Y14.5M-1994

Software: Solidworks 2013 SP5.0
ISSUED BY: W.A.S. 12/16/11
DRAWN BY: J. Downey 5/31/12
MFG CHK BY: R.B. 9/26/12
CHECKED BY: W.A.S. 9/26/12
ENG APPR BY: W.A.S. 10/15/12
CAD FILE NAME: 6910080-000_ASSEMBLY