



AERO SUPPLY LTD. EST. 1994



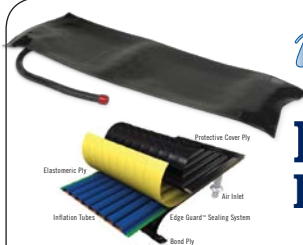
@KADEXAero

AIRCRAFT PARTS SALES & SERVICE
www.KadexAero.com PARTS@KADEXAERO.COM



photo credit: Viking Air Ltd.

Viking Aircraft Operators



ice shield
de icing systems

DHC-6 De-Ice Boots

- Delivery - We guarantee it
- Fully interchangeable with BFG boots
- Direct factory shipments to your door
- Fully compatible with existing air supply lines
- Outstanding value - wide market acceptance
- Easy to install - preferred by technicians
- High gloss finish
- Edge Guard™ sealing systems results in proven service life extension
- **ASK us for Adhesive Kit Specials**

MFR Rebates Apply. Ask for details.

• Prop deicers • Prop harnesses • Lip boots • Installations supplies • Adhesive & repair kits

SMRPLUS

IceShield Plus™ is a silicone based liquid coating that reduces ice adhesion to wing and prop boot de-icer surfaces. This reduced ice adhesion increases the efficiency and performance of the working de-icer.

IceShield Plus™ should be reapplied after 50 flight hours for wing de-icers and 15 flight hours for prop de-icers.



MidContinent
INSTRUMENTS+AVIONICS

SAM MD302 2 Inch Standby Attitude Module



Selectable Orientation



New Lower Price for 2015
New Heading Displayed via ARINC 429 Input
New Live Config Preview
New Storage Mode for Battery Preservation
New Variable Vne Based on Altitude
Software Version 1.0.4

New Amended FAA STC 148 A/C Models now inc....just added Aviat - Husky, Beechcraft Baron & Bonanza All Models, Beechcraft King Air C-90, Beechcraft 99, Cessna Mustang, Cessna Conquest, Cessna Caravan, Cirrus SR20 & SR22, Mitsubishi MU2 Series, Quest Kodiak



BARRY ENGINE MOUNTS



PK7350721-7 - Rebuild Kit - Molded Assy x 2, Bumper & Tube

7350721-7 - Isolator Assy - OH Exchange - OH Outright

Customer Property Repair & Overhaul

Call today for Parts



KAD AEROSPACE INC.
FAA PMA Parts Development
& Manufacturing

AIRCRAFT INSTRUMENTS SALES AND SERVICE



AERO-MACH
labs, inc.
www.aeromach.com
AS9100, AS9110, & ISO 9001 CERTIFIED

For over 40 years, Aero-Mach has built their reputation for overhauling and repairing instruments and fuel system components on quality, value, and service.



ELECTRICAL

Aerospace Electromechanical Parts

TRUE BLUE POWER

A division of Mid-Continent Instrument Co., Inc.

POWER INVERTERS

Call for your price!

3 New DC to AC Inverters

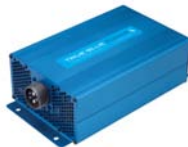
TI254

250 VA • 115 VAC • 400Hz
Only 2.2 lbs • LP U\$2,228.



TI256

250 VA • 115 VAC 26 VAC • 400Hz
Only 2.6 lbs • LP U\$3,600.



TI1202

1200 VA • 230VAC • 50 Hz
Only 7.3 lbs • LP U\$5,181.



STANDBY BATTERY

- 18VDC to power 4300 LifeSaver
- recommended replacement 3 years after date on nameplate.



Lear Chemical
Research Corporation
- Anti-Corrosion
Formula Specialty
Penetrants and
Lubricants



PPG Aerospace
Sealants

PR1422-
PR1425
PR1440
PR1826
PR1829



CONCORDE

RG-380E/60L, RG-380E/44, RG-300 Batteries

- superior engine starting performance at any temperature
- greater capacity for emergency power
- longer life
- maintenance free characteristics
- larger than typical intercell connections for optimum current flow
- proprietary PolyGuard™ Separators around the plates for an added layer of protection against internal shorts
- low internal resistance for high output current and faster charge acceptance



...the heart of your aircraft®

CONCORDE
Platinum Series®



REPLACEMENT AIRCRAFT PARTS CO.

FAA PMA Brake, Fuel Pumps
Pneumatic, De-Ice, test Brakes Discs -
Deice Modules & Brushes - Fuel Pumps

CUSTOMER PROPERTY REPAIR AND OVERHAUL



One box - One Freight charge. Send us your component today!

Excellent volume growth since 1994 allows KADEX to sit well positioned to offer strong value on your repair and overhaul jobs. We offer our experience, capabilities, good turn times and excellent after-sale support to bring your serial number home with a smile. One box - one freight charge. Send us your components today!

The Lifesaver®

Electric Attitude Gyro

When the panel goes dark, the Lifesaver powers on. The only electric attitude indicator with a built-in battery backup, the Lifesaver gives you one full hour of emergency attitude reference – the precious time you need to land safely.



MD93 Digital Clock/USB Charger | Save Panel Space



The 2-inch MD93 Digital Clock/USB Charger features intuitive operation with four modes: Local Time, Universal Time, Flight Timer and Stopwatch. The Dual USB Charging Port supplies the electric current needed to charge any standard or high-power device with a USB interface, while protecting itself and the charging device from short circuit, power surges and over-current potential.

TA102 Dual USB Charging Port

Small. Economical. Easy to install.

Simultaneously provides 2.1 amps of power per charging port to electronic devices with a USB interface.



EASA
approved



RAPCO, inc.
REPLACEMENT AIRCRAFT PARTS CO.

NEW RA1D2-17 & Customer Property Overhaul 1D2-17, 2B7-1

**AIRBORNE • DUKES • RAPCO
CRANE/ADEL • WELDON • LEAR
ROMECC • KELLY • CJ • LYCOMING**

- Quick Turns • Great value
- Great Warranty
- New Outright on Select Pumps

Fuel Pumps

**Overhaul - Exchange
Customer Property Overhaul
New Outright**



FFC
FLOATS & FUEL CELLS®



OEM P/N	FFC PMA P/N
C6SC1051-3	1051-3
C6SC1052-3	1052-3
C6SC1053-3	1053-3
C6SC1054-3	1054-3
C6SC1055-3	1055-3
C6SC1056-3	1056-3
C6SC1057-3	1057-3
C6SC1058-3	1058-3

KADEX

AERO SUPPLY LTD. EST. 1994

SPECIALS

...the heart of your aircraft®

CONCORDE

BC-9000 Battery Charger

Portable light weight 25
Amp charger for economi-
cal, easy, accurate charging



BC-8000 Battery Charger & Capacity Tester

Cost effective charger & capac-
ity tester. Step by step digital
display.

Extend Battery Life using Up-
dates to the Concorde
Battery Component
Maintenance Manu-
al for RG(r) Series Main Aircraft Battery, see
newly released CMM (24-30-71), Docu-
ment No. 5-0171 Revision N, dated March
31, 2015, provides clarification of the Con-
ditioning Charge Procedure used to recover
sulfated batteries as evidenced by way of
a failed Capacity Test. To download the
latest version of Concorde's Component
Maintenance Manuals please visit: www.concordebattery.com/main_air_tech.php



MICHELIN

Plenty of fleet programs available on Michelin tires

New lower tire pricing on 6.50x10x10p
TT/TL - Michelin discontinued 021-356-1,
6.50x10x10p TT/TL Aviator.

Michelin replaced with 076-356-1 Michelin
Air Premium Tire for Navajo and King Air.

PT6A Series Engine Accessories

PT6A Series -20, -27, -28, -34, -34AG, -41, -42, -60, -65, -67, -114A

• Fuel Pumps • Fuel Controls • Start Controls • Fuel Heaters • Bleed Valves • Ignition Exciters • Fuel Nozzles

WHELEN® DHC-6 LED UPGRADES (LED's for all Viking Aircraft)

Option 1 - Position Lights without Strobe - Installation via TSO Standard for Position Lights



Aft Position Light Options – Orion 500 (NO External Power Supply Required)

Installs via STC



Option 2 - Position Lights WITH Strobe - Installation via STC



Direct Replacement for Brand "G" Light assembly. Vertical Mount most common on DHC6.

Requires Connector Harness to make install easy.

If going with strobe option: Wing Tip Mounted Power Supply (qty2 required). - Installation via PMA. Can be synchronized so both flash together.



(Installation Kit)

TAXI LIGHT 4594 BECOMES LED



Tail Mounted LED to replace upper Beacon – Direct Replacement for existing Beacon

Installs via STC



(Installation Ring)

LANDING LIGHT 4553 BECOMES LED



KADEX AERO SUPPLY LTD.

PETERBOROUGH: 925-211A Airport Road Peterborough, ON K9J 0E7 • 1-705-742-9725

CALGARY: 3650 19th St. NE, Unit #6, Calgary, Alberta Canada T2E 6V2 • 1-403-250-5241