

THE KING AIR 350 JUST GOT **BRIGHTER**

NEW KING AIR 350 LED WING TIP LIGHT ASSEMBLY

Add the OR500 Position / Anti-collision Tail Light to your King Air 350 for a complete and reliable LED system

- Increases safety, "See and Be Seen", "Reduced Maintenance Costs"
- Easy install, no more high voltage power supplies
- Reduces electrical load and lens deformation
- Proven system based on TSO Approved components



5x
Brighter



(Hyperion I) KING AIR & 1900
LED WING TIP LIGHT REPLACEMENTS

LED ICE LIGHT

NEW

Application:

Beechcraft King Air 90, 100, 200, 300, 99 Airliner Series, Baron 55, 58, Beechjet 400, 400A, Cessna Caravan 208, 208B, Centurion 210, P210, T210, Conquest II 441, Citation 525 Series, Bravo 550, 560, 560XL, 650 Series, 680.

- 100,000 Hours of Life
- Better Visibility During Taxiing and Takeoff
- Significant Reduction in Power Requirements
- Significant Reduction in Heat Eliminating Lens Degradation
- Direct Drop-In Replacement for Incandescent Bulbs
- Improved Efficiency

NOW \$299.95ea USD
Reg. \$389.95ea USD

FAA-PMA Approved

*Direct drop-in replacement for bulbs
A7079B24, MS25338-7079, and WA7079B24.



PSA DE-ICE BOOTS

High quality de-ice boots for general and commuter aviation



FASTER • Fly immediately after installation

BETTER • Improved installation method

SMARTER • FAA Approved

IN STOCK

Peel.Stick.Fly.™



ENGINE MAINTENANCE

Keep your engine running during the winter months!

ORDER TODAY



Engine Isolators



Replacement Cylinders

RG-220 BATTERY

For Air Tractor



separators, low impedance design and more!

SUBSTANTIALLY REDUCE HOT SECTION COSTS

Looking for a better battery?

Concorde's RG-220 Battery for AT802 is coming soon to KADEX featuring emergency power, proprietary polyguard

Coming Soon

AVIATION SAFETY STARTS WITH TANIS PREHEAT

- Piston Preheat
- Turbine Preheat
- Rotorwing Preheat
- Engine Preheat Kits
- Replacement & Service Parts



ORDER TODAY

TANIS



SPECIALS IN EFFECT: FEBRUARY 1-28, 2022

NEW

PARMETHEUS G3

PAR36 LANDING & TAXI LIGHT

2.5 TIMES BRIGHTER THAN
PARMETHEUS PLUS



TAXI
PN: 01-0772102-15

LANDING
PN: 01-0772102-10
NOW \$279.00ea USD

SPECS

- High Intensity LED Product
- Weight: 08lbs
- Max Current Draw:
3.8 amps at 14VDC
1.9 amps at 28VDC

MODEL	PART#	DESCRIPTION
P36G3L	01-0772102-10	Parmetheus™ G3 Par 36 Landing Light
P36G3T	01-0772102-15	Parmetheus™ G3 Par 36 Taxi Light



FUEL PUMPS



KADEX has an extensive stock of
New & Overhauled Weldon Aircraft Pumps.

- Beechcraft • Cessna • Diamond
- Robinson • Piper • Mooney
- Zlin • Commander
- Daher



FLUIDS • GREASES LUBRICANTS



IN STOCK

FLIGHT SCHOOLS CHOOSE RAPCO



RA066-06200
Brake Lining

RA066-10500
Brake Lining

NOW \$12.68ea USD

RAPCO INC.
REPLACEMENT AIRCRAFT PARTS CO.

Beechcraft PARTS

IN STOCK

90852 Series Anti-Collision Beacon



PN: 01-0790852-03
PN: 01-0790852-04
PN: 01-0790852-05
PN: 01-0790852-5D
PN: 01-0790852-06
PN: 01-0790852-08

NOW \$1638.00ea USD



NEW



CHRONOS

DIGITAL CLOCKS USB CHARGERS

8 MODES

Local time, UTC / Zulu Time,
Flight Timer, Countdown Timer,
Stopwatch, Volts,
OAT, Secondary Air Temp

Digital Clock (CH93)
PN: 6420093-0

High Power USB Charger (CH93HP)
PN: 6420093-2

High Power USB Charger (CH93HP)
PN: 6420093-3

MAX Power USB Charger (CH93MAX)
PN: 6420093-5

Up to 75 WATTS of MAX USB Power!

OVERHAUL & REPAIR CAPABILITIES

FUEL PUMPS

KADEX offers an extensive list of repair and overhaul capabilities on Fuel Pumps.

- Quick Turnarounds on Customer Property Overhauls
- Unbeatable Value
- New OEM and FAA/PMA parts
- Warranty same as OE

- 1D2-12** Beechcraft King Air – C90 Series, E90, 99 Series, A99A, B99, C99, 100, A 100 Series, B100, 200 Series, B200 Series
- 1D2-13** Beechcraft King Air – E90 & 300 Series, B300 Series
- 1D2-17** De Havilland Twin Otter – DHC-6-100, -200, -300
- 1C45-5** Eurocopter AS-350 Series



WHEEL SEAL KIT

For Piper Aircraft

PN: WH-KT-39

- FAA-PMA Approved
- Direct Replacement
- Grease seal rings, plates and felts to service a wheel



McFarlane

FIRE EXTINGUISHERS

Wheeled and handheld fire extinguishers for commercial and general aviation use.



- Halon 1211
- Halotron 1
- Novec 1230
- FM-200
- Halotron Brx
- Brackets

IN STOCK

H3R
AVIATION

ENGINE ISOLATORS

1900

00-13298-01

KING AIR

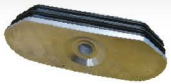
50-389133-15
93880-19

PC-12

93880-23

CESSNA

94011-02
94011-20



FlySAM

2-inch Standby Attitude Module

Compact
Flexible
Advanced



SELECTABLE
ORIENTATION

FIELD UPGRADABLE
SOFTWARE

EMERGENCY
BATTERY

FAA TSO Certified

MidContinent
INSTRUMENTS+AVIONICS

EXHAUST NUTS / STUDS

For Continental and Lycoming Engines

- Heat-treated, high-strength stainless alloy
- Galling and corrosion resistant
- Lasts longer



ORDER TODAY

McFarlane

AMGLO HALOGEN BULBS

Engineered with high vibration resistance for countless takeoffs and landing procedures.



- 10x Longer Life
- Increased Reliability
- Lightweight



HELICOPTER



Robinson R44

Collector Left Hand Assembly

PN: C169-5AWL ALT: C169-5

Collector Right Hand Assembly

PN: C169-6AWL ALT: C169-6

Muffler Assy Raven II

PN: C169-32AWL ALT: C169-32

Muffler

PN: C169-3AWL ALT: C169-3



Transport Canada PMA Approved



100154

Stowable Ground Power (10AH)

100155

Stowable Ground Power (14AH)

STARTSTICK
Stick, start & fly!



RG-222
Battery



RG-350
Battery



Sikorsky S-76
Brake Overhaul Kit
PN: RFS-242K

RFS
RAPID FLEET SUPPORT

CONCORDE

SKURKA BRUSHES

For Starter Generators

FAA-PMA Approved



- Economical
- FAA-PMA Approved
- Constructed for easier maintenance

SEGINUS
AEROSPACE LLC

INVERTER

TI2000 SERIES

Powerful, reliable and ultra-lightweight emergency power DC-to-AC Inverter

TI2000
PN: 6432000-1

TI2002
PN: 6432000-2

TI2004
PN: 6432000-4

IN STOCK



TRUE BLUE POWER
A division of Mic-Constant Instrument Co., Inc.

WINDSHIELDS

IN STOCK



YOUR SOURCE FOR

RFS
RAPCO FLEET SUPPORT



RFS1446K
Hot Pac Kit
For Citation 500, 550

SHIM INSULATORS

Replaces Cleveland 068-03300



PN: RA068-03300

FAA-PMA Approved

RAPCO, Inc.
REPLACEMENT AIRCRAFT PARTS CO.

BUSINESS AVIATION GENERAL AVIATION COMMERCIAL AVIATION

- Proven Reliability
- Upgraded to the latest OEM approved design configuration
- Composite Windshields Technology - High Impact Resistance and High Strength-to-Weight ratio of Polycarbonate
- 36 Month Warranty



AOG SERVICE AVAILABLE 24/7

FILTERS



WF334761
Fuel Filter
Learjet 24 Series,
25 Series, 28, 29,
31, 31A, 35,
35A (C-21A), 36, 36A, 55, 55B, 55C, 60



P10-7172
Filter - Air Intake
Cessna 170/172



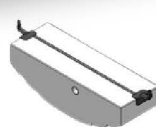
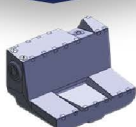
EBG03-0018
Filter
Beechcraft King Air
Series



WF337408
Fuel Inlet Screen
PT6A

Donaldson
FILTRATION SOLUTIONS

FUEL CELLS



Beechcraft
Cessna
De Havilland
Piper
Aero Commander
Bell

IN STOCK

FFC
FLOATE & FUEL CELLS, INC.

SEALANTS

KADEX stocks a variety of lightweight, high performance sealants for your aircraft.

- Firewall Sealants
- Corrosive Inhibitive Sealants
- Sem Kits



ORDER TODAY



AOG SERVICES

Available 24/7

aog@kadexaero.com
1-705-742-9725 ext. 122
(Toll Free) 1-888-523-3988 ext. 122

Trust KADEx to get you up in the air quickly!

Our team understands pressures associated with aircraft readiness and when things are not ready we jump into action.

