

National Stocking Distributor for Mid-Continent Instruments and True Blue Power

• In Stock In Canada • Save Money!



PN: 9015607
Standby Battery



PN: 6430202-1
TA202 USB Charging Port
Dual USB-A / USB-C



PN: 1394T100-7B
Turn Coordinator



PN: 6420302-1
MD302 SAM
Standby Attitude Module

MidContinent[®]
INSTRUMENTS+AVIONICS

TRUE BLUE POWER[®]
A division of Mid-Continent Instrument Co., Inc.

NEW

PARMETHEUS™ G3 PAR 46 LANDING LIGHT

PN: 01-0790906-00

SPECS

- High Intensity LED Product
- Weight: 1.52lbs
- Max Current Draw:
6.0 amps at 14VDC
2.7 amps at 28VDC

**2.5 TIMES BRIGHTER
THAN THE
PARMETHEUS PLUS**



NEW

KING AIR 350 LED WING TIP LIGHT ASSEMBLY

5x
Brighter



- Increases safety, "See and Be Seen", "Reduced Maintenance Costs"
- Easy install, no more high voltage power supplies
- Reduces electrical load and lens deformation
- Proven system based on TSO Approved components

NEW

COMPACT GROUND POWER UNIT

PRE-ORDER TODAY



- Compatible, lightweight and convenient
- Multi-function display and control cluster
- Manufactured for toughness and longevity

STARTSTICK

NEW FAA PMA PARTS

PART NUMBER	DESCRIPTION
105739X-YN1280	BUSHING
101-820021-3	PLUG ASSEMBLY
114-820068-1	PIN
068-01100	SHIM INSULATOR
068-03300	SHIM INSULATOR
205-05201	DRIVE KEY
50-820092	ROLLER
90-820010-3	BUSHING

PARTS. SUPPLIES. REPAIR & OVERHAUL.

NEW

LED ICE LIGHT

Application:

Beechcraft King Air 90, 100, 200, 300, 99 Airliner Series, Baron 55, 58, Beechjet 400, 400A, Cessna Caravan 208, 208B, Centurion 210, P210, T210, Conquest II 441, Citation 525 Series, Bravo 550, 560, 560XL, 650 Series, 680.

**Direct drop-in replacement for bulbs A7079B24, MS25338-7079, and WA7079B24.*



PN: 7310009-000

- 100,000-Hour Life Span
- Requires 7.5x less power
- Better Visibility During Taxing and Takeoff
- Significant Reduction in Power Requirements
- Improved Efficiency



FAA-PMA Approved

Ice Light Window

PN: 4000041-000
Notched

PN: 4000041-001
Square

- Improved Ice Detection
- Shatter Resistant



Application:

Beechcraft Piston and Turbo Prop



GREASE 58

IT'S TIME TO MAKE THE SWITCH

- Enhanced Corrosion Protection
- Excellent Antiwear & Load-Carrying Properties
- Longer Component Life, Longer Grease Life

IN STOCK



AeroShell

EXIT SIGN ACCESSORIES

For Beechcraft King Air

IN STOCK



PN: 99-384012
Exit - Pull Marker



PN: 129-380003-1
Exit Sign - Glow in the dark



PN: 130-380006-1
Airstair Door Placard

OVERHAUL & REPAIR CAPABILITIES

TRIM ACTUATORS

Save on customer property overhaul by choosing KADEX.

Application:
PC-12

PN: 129-1-1100-02
ALT: 978.73.14.203

- Overhaul Required Every 5 Years
- Total Life Limit of 20,000 hours or 27,000 flights



Visit www.kadexaero.com
Toll Free: 1-888-523-3988
Parts@kadexaero.com

Calgary
403-250-5241

Peterborough
705-742-9725

PARTS. SUPPLIES. REPAIR & OVERHAUL.

LED WINGTIP UPGRADES



71379 Series
Forward Position Light
(14V / 28V) - Red, Green



71987 Series
Anti-Collision Light
(28V) - White



ORION 650 Series
Forward Position/
Anti-Collision Light
(14VDC / 28VDC) - Red, Green



Chroma Series
Plug n Play Position Lamp
(14VDC / 28VDC) - Red, Green



FAA-PMA Approved

SHIMMY DAMPENER

Lasts up to 30 years once mounted on an aircraft

PN: SE1076-1



- No Hydraulic Fluid
- Consistent Damping From -30° to 150°
- Lowers Operating Costs



EXHAUST MUFFLER

For Cessna 172/177 Series

PN: 1754001-25AWL
ALT: 1754001-25



FAA-PMA Approved

BATTERY MINDER

For Lead-acid Batteries Only

Guaranteed to never overcharge/undercharge



PN: 4165-CEC
ALT: 244CEC1-AA-S5



SEAT BELT/ SMOKING SIGN GRAPHIC

Pair with LED No Smoking/Fasten Seat Belt Light



PN: 7200198-001

Application:
King Air and Pilatus PC-12,
PC-12/45, PC-12/47



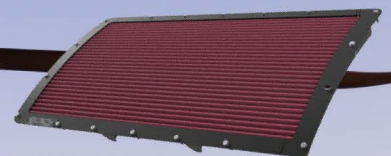
HELICOPTER



01-0771080-01
LED Beacon



19001-B
Fuel Pump
Robinson R44 Series



122350-101
Filter Assembly
AW139, AB139 Series



Turbine Engine Oil 555
AeroShell



RG-206
Battery



Peterborough
705-742-9725

Visit www.kadexaero.com
Toll Free: 1-888-523-3988
Parts@kadexaero.com

Calgary
403-250-5241

PARTS. SUPPLIES. REPAIR & OVERHAUL.

BRAKE ASSEMBLY

For Pilatus PC-12, PC-12/45,
PC-12/47, PC-12/47E

IN STOCK

PN: 30-244
OH/EX



RG-220 BATTERY

Application:

Air Tractor AT-600, AT-800, Ayres S2RT,
Thrush 501, 550 and 710 Series.



IN STOCK

Reliable
Durable
Reduce Hot Section Costs

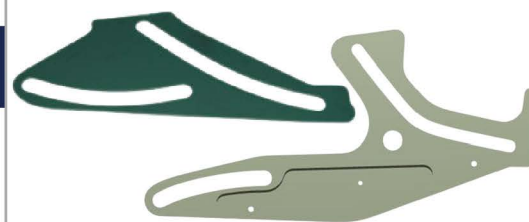
FAA-TSO Approved **CONCORDE**

FLAP TRACKS

For Cessna 150 - 210 models

Prevent dangerous and expensive binding
problems!

- FAA-PMA Approved
- Smooth rolling action
- Alodined and epoxy primed for corrosion protection
- 20% stronger, 6x fatigue strength



McFarlane

TUBES

KADEX has hundreds of Tubes Back In Stock.
Call Us Today



IN STOCK

GOODYEAR

IGNITION EXCITERS

KADEX stocks OH/EX ignition exciters and provides
overhaul capabilities for a variety of aircrafts.

BEECHCRAFT CESSNA HAWKER
BELL LEARJET FALCON
AND MORE!



GOVERNORS

GOVERNOR

PN: 210632 ALT: 210630

GOVERNOR

PN: 210631 ALT: 115-389014-5

PROPELLER GOVERNOR

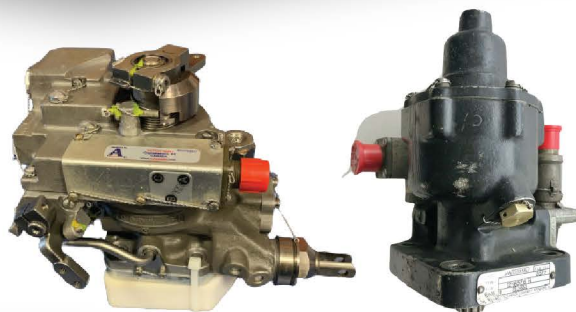
PN: 8210-410 ALT: 3118496-03

GOVERNOR CSU

PN: 8210-310 ALT: 8210-212

GOVERNOR OVERSPEED

PN: B210631 ALT: 210631



IN STOCK

FIRE EXTINGUISHERS

KADEX stocks wheeled and handheld fire
extinguishers for commercial and general
aviation use.

IN STOCK



H3R
AVIATION

ACF-50



Corrosion prevention for
airframe, avionics, and
ground support equipment.

Effective for up to 24 months!

ACF-50
ANTI-CORROSION FORMULA

WHEEL & BRAKES



Wheel & Brake Conversion Kit

PN: 199-125
HIGH FLOATATION



Wheel Assembly (OH)

PN: 40-289

HYDRAULIC PUMP

For Piper PA-31 Navajo



IN STOCK

PN: 1213HBG310A