

LED LIGHTING UPGRADE

KING AIR 300/350 SERIES



LED LIGHTING

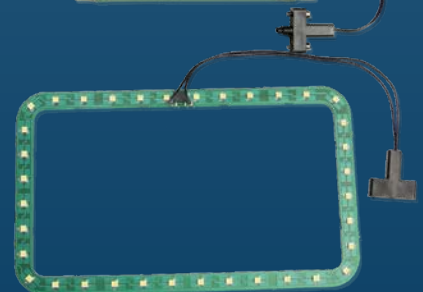
INTERIOR UPGRADE

Let Us Light Up Your King Air 300 Series!

Our LED upgrade Lighting System is a product of state of the art technology in LED Lighting and hands on engineering time in our COlor Rendering Lab. The King Air LED upgrade has equivalent lighting characteristics of the cold cathode fluorescent lights, is dimensionally the same size as the current King Air Light and has a longer operating life span.

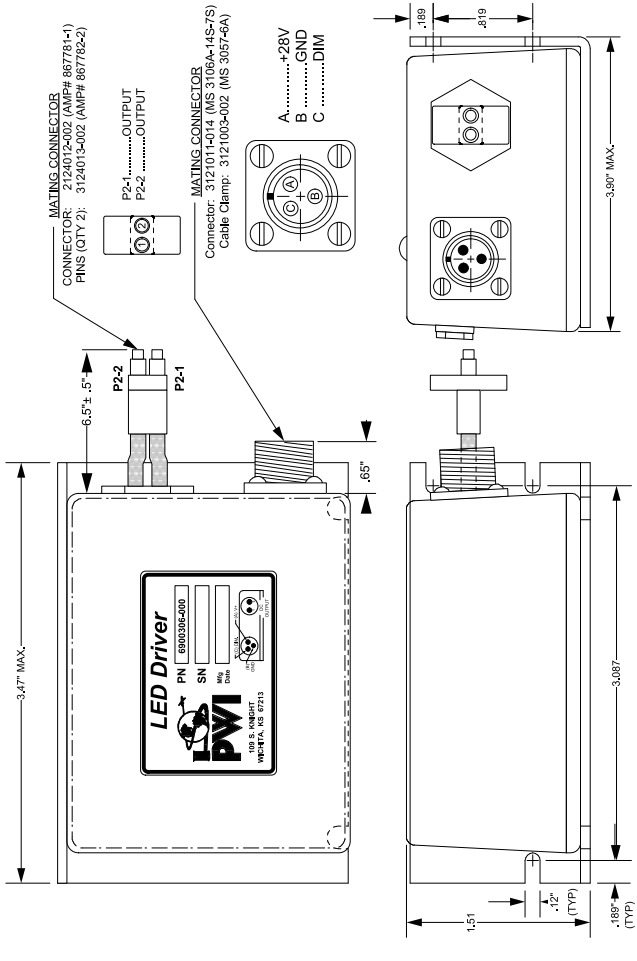
ADVANTAGES OF THE LED UPGRADE SYSTEM:

- » Direct replacement of the CCFL power supply and lamps.
- » No impact to aircraft interior.
- » Uses the existing DIMMER and ON/OFF system.
- » 55% (~12.4lbs.) in weight savings.
- » 40% lower system operating temperatures.
- » 35% reduction in operating current
- » Eliminated the high voltage that was required for CCFL lamps.
- » Lower EMI
- » STC Approved SA01634W1



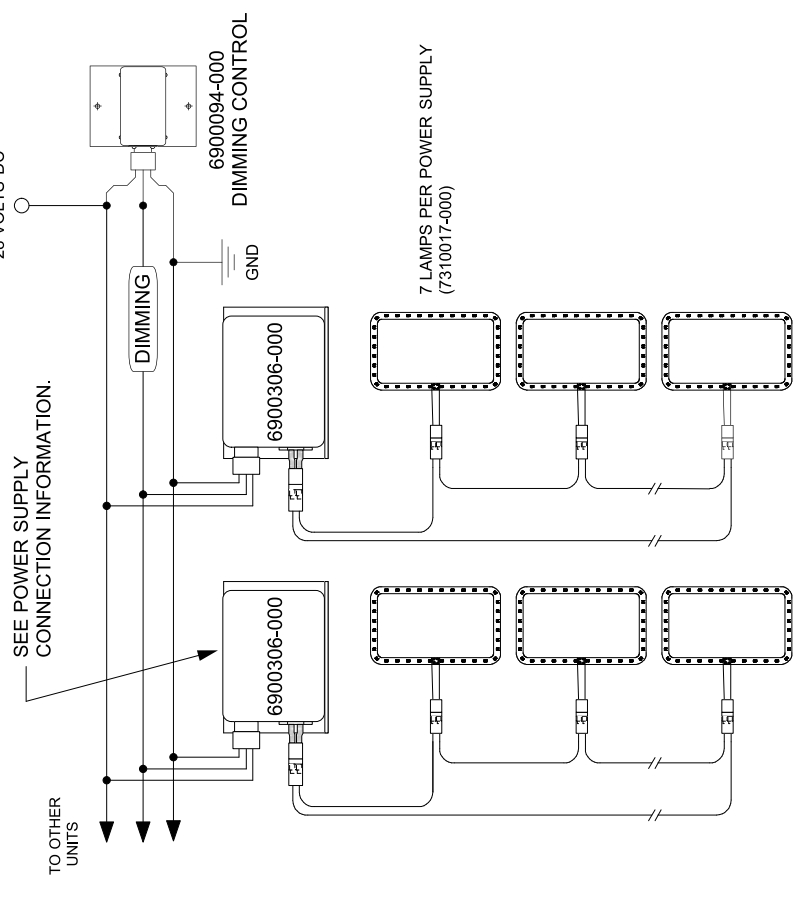
PROPRIETARY INFORMATION
 THE FURNISHING OF THIS DOCUMENT DOES NOT CONVEY ANY REPRODUCTION OR MFG. RIGHTS.

REV	DESCRIPTION	DATE	APPROVED



Wiring For 6900306-000 Inverter

Installation Schematic:



6900306-000			
SPECIFICATIONS	MIN.	TYP.	MAX. UNITS
INPUT VOLTAGE DC:	18	28	32 VDC
INPUT CURRENT:	0.2	-	2 AMPS
OUTPUT VOLTAGE:	-	-	84 VDC
OUTPUT CURRENT:	-	-	240 mA
DIMMING:	-	-	-
LAMP LENGTH:	-	-	* Grams
WEIGHT:	-	590	- Cent.
OPERATING TEMPERATURE:	-20	-	+55

* Unit will drive a maximum of 7 lights, P/N# 7310017-000.

		109 S. KNIGHT WICHITA, KANSAS 67213 TEL: 316-942-2811 FAX: 316-942-6209	
POWER SUPPLY INSTALLATION			
ISSUED BY	W.A.S.	11/2/09	SCALE None EST. WGT - SHEET 1 OF 1
DRAWN BY	J.E.D.	12/7/09	
CHECKED BY	W.A.S.	12/8/09	
APPROVED BY	W.A.S.	12/8/09	
CAD FILE NAME 6900306-000 INSTALLATION		DRAWING NO. 6900306-000	
UNLESS OTHERWISE SPECIFIED DIMS ARE IN INCHES 1 PL ± .125" 2 PL ± .03" 3 PL ± .010" 4 PL ± .0005" INTERPRET DIM AND TOL PER ASME Y14.5M-1994		MATERIAL: **	
APPLICATION	USED ON		
NEXT ASSY			

ORDER P/N: 6900306-000