

AVIATION SAFETY STARTS WITH TANIS PREHEAT

Tanis Aircraft Products are the only engine preheat system(s) that applies heat directly to all of the cylinder heads, oil sump and crank case.

Heating Kits - 4 Cylinder,
6 Cylinder, PT6

IN STOCK  IN CANADA



**FROM OFF TO LIFTOFF
IN 2 MINUTES!**



NOW DISTRIBUTING



ICE SHIELD

SURFACE-PROP-HARNESSES-INTAKE

Ice Shield is currently available for over 75 aircraft models, covering 85% of general aviation aircraft operating today. New alternatives for the Bombardier DHC-8 family, SAAB 340, Beech 1900 and Embraer 120 aircraft models.

48-hour delivery guarantee and a no-hassle warranty.

Emphasizing quality, value, service and selection, Ice Shield has become the preferred brand for aircraft de-icers. Owner/operators are switching to the Ice Shield de-icing product instead of OEM replacement due to the durability, reliability, and availability of products. The Ice Shield brand is OEM for Beechcraft, Epic, Lancair, Viking and Vulcanair.

• FASTER • BETTER • SMARTER •

IGNITION EXCITERS

Specializing in ignition excitors - flat rate - 2 year warranty. Customer property overhaul or exchange.



- 10-381550-Series
- Beech, PT6, Citation
- 10-392000-2 Metro & Merlin
- 10-614950-1 RR250/Bell
- 9049400-1 PW120

WINDSHIELDS

**KING AIR & 1900
INSTALL KIT SPECIAL
FLAT RATE EXCHANGE
3 YEAR WARRANTY**



ORDER TODAY



FILTERS

KADEX just announced as Canadian distributor for Donaldson line of GA and Rotorcraft filters. Building our stock now. How can we assist in your supply chain?



NOW DISTRIBUTING

IN STOCK

Fly Clean. Fly Donaldson.

MONSTER RETREAD



PREMIUM AIRCRAFT RETREADS

IN STOCK

LEARN ABOUT OUR EXCHANGE PROGRAM

DISTRIBUTION YOU CAN COUNT ON

- Parts in Canada
- Same Day Shipping on in-stock parts
- Repair & Overhaul Services
- Good Old-Fashioned Service
- After Hours/Weekend AOG Support
- Tech Support
- Quick Delivery Rush/AOG's



CESSNA CITATION LED BEACON UPGRADE

MORE LIGHT, LESS MAINTENANCE.

Upgrade your grimes anti-collision light to LED.



Call Ken or Jonathan for LED upgrades – Upgrade Specialists

UPGRADE



CABIN HEATERS, BLOWERS, PARTS



IN STOCK



NEW SHIM INSULATORS

RAPCO offers PMA approved replacement shim insulators



NEW
FAA-PMA

ORDER TODAY



DISCONTINUED STROBE LIGHTS

01-0770029-31

RED/WHITE STROBE 10-30 Volt

- List \$776 • SALE \$543.20 USD

(3 ONLY)

01-0770029-29

RED STROBE

10-30 Volt

- List \$776 • SALE \$465 USD

(1 ONLY)



**SAVE 30 - 40%
OFF LIST**

IN STOCK



MAIN BATTERIES

Concorde sealed lead acid batteries are on mission critical operations everyday where dependability matters most.



RG-206

RG-380E/44K



UPGRADE YOUR BRAKE DISCS AND LININGS TO RAPCO TODAY



IN STOCK

**UPGRADE
TO RAPCO
BRAKE DISCS
FAA-PMA APPROVED**

TC 2000

AC-TO-DC CONVERTER

This powerful voltage converter delivers 2,000 watts of DC power to in-flight entertainment systems, interior and exterior lighting, and in-seat, cabin and cockpit USB power.



TRUE BLUE POWER
A division of Mid-Continent Instrument Co., Inc.

NEW APPROVALS

Always striving to lower your cost of maintenance thru PMA & PDA

P/N	DESC	APP
7335FT972P3	SEAL	1900
7235MT987N	SEAL	1900
109-00200	WEAR PAD	1900
109-00201	WEAR PAD	1900
114-820077-1	BRACKET	1900
114-820077-3	BRACKET	1900
99-810067-1	BOLT	KING AIR
99-810067-3	BOLT	KING AIR
101-521033-1	WASHER	KING AIR
101-810151-1	BOLT	KING AIR
68-216	O-RING	KING AIR
TS60	EMERG BATT	DHC8-400
68-1125	O-RING	DHC8-400
114-810025-3	DRAG LINK	1900
114-810025-4	DRAG LINK	1900
101-810153-9	PLATE	KING AIR
114-820051-1	ORIFICE	1900
50-810335-3	BUSHING	KING AIR
50-810354	GUIDE	KING AIR
50-810356	SHIM	KING AIR
101-810177-3	BOLT	KING AIR
99-820110-9	PIN	KING AIR
50-810324-1	PIN	KING AIR
99-810045	LINK	KING AIR
50-395	ID PLATE	DHC8-400
50-533	INSTR PLATE	DHC8-400
56-1178	BACK UP RING	DHC8-400
68-1551	BACK UP RING	DHC8-400
99-810022-7	PLATE	KING AIR
184-443	BACK PLATE	KING AIR
60-438	AXLE SPACER	KING AIR
5005129	PISTON	BEECHJET
5006521	PISTON	DORNIER 228
AHO89645	WEAR PIN	HAWKER 800
AHO89576	Piston	HAWKER 700
74-645	Piston	KING AIR
133-1196	Stator Disc	T6 / 3000 JPATS
068-01700	Shim Insulator	PA60, BN2A, B55 Series
068-02700	Shim Insulator	B55 & 58 Series
068-02900	Shim Insulator	C425 & 404
114-810043-3	Support	1900

TWIN OTTER TIRES



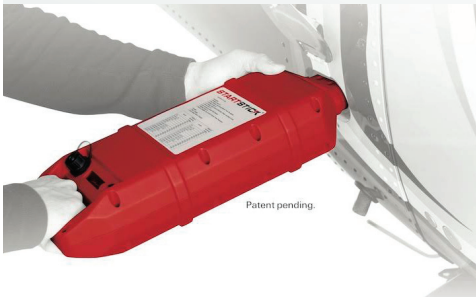
ORDER TODAY

IN STOCK  IN CANADA

DISTRIBUTION YOU CAN COUNT ON

STARTSTICK

COMPACT GROUND POWER
 The Startstick is the most advanced stowable compact ground power unit on the market. Two different models (10Ah-14Ah).
 Learn more at www.kadexaero.com



STARTSTICK

5606H HYDRAULIC FLUID
 AN EASY SWITCH



IN STOCK

PC-12 ENGINE MOUNTS
 NEW, OH/EX, OH

• 93880-23

Canadian Distributor for General Aviation products – Airline availability coming.



IN STOCK

SAM

STANDBY ATTITUDE MODULE
 The first certified 2-inch indicator to display attitude, altitude, airspeed, vertical trend, heading and slip information just got smarter.



IN STOCK  IN CANADA

CHARGE & CONNECT
LIMITED LIFETIME WARRANTY



TA102



TA202



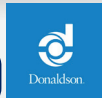
BELL 206 FILTERS
 FUEL FILTER REPLACEMENT KIT

• KD651510

AS 350 FILTERS
 FUEL FILTER

• WF335192

NOW DISTRIBUTING



AEROSHELL ANTI-ICE FLUID
 COMPOUND 7



APPROVED FOR CESSNA CARAVANS



ORDER TODAY

BEECH 1900 SUPPORT
 DEDICATED TO SUPPORTING BEECH 1900 & KING AIR OPERATORS



ACF50 AIRLINE APPLICATION KIT

STOP CORROSION ON CONTACT



IN STOCK



DE-ICE ACCESSORIES
 BIG SAVINGS ON FAA/PMA ALT'S



DE-ICE BRUSHES

3E1443-X, 3E1206-X, 3E2522-1



MODULAR DE-ICE BRUSH ASSEMBLY

3E2090-X, 3E2044-X, 3E2042-X



UNIVERSAL RODDED BRUSH MODULE KIT

RA2111U - with wire markers, terminal and spacer. Replaces: BFG PN. 3E2011-1 thru -6, -8 & -10 brush modules with rodded brushes.



REPAIR & OVERHAUL

- Landing Gear
- Wheel & Brake
- Ignition Exciters
- Actuators
- Fuel Pump
- Windshields
- Engine Mounts
- Fuel Cells
- Avionics
- Instruments
- Valves
- and more



ANTENNAS

- S67-2002
- DMN150-10-X
- 071-01553-0200
- C1-105-X



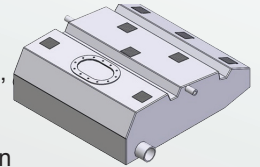
ORDER TODAY

FUEL CELLS



New PMA and Overhauled / Repaired fuel cells for your aircraft and the most extensive inventory in the world. FFC is one of the few aircraft fuel cell manufacturers that meet the Technical Standard TSO-C80.

Beechcraft, Cessna, Twin Otter, Piper, Aero Commander, Bell, MD – plenty on the shelf in Canada ready to ship right now.



NEW FUEL PUMPS

NEW
FAA-PMA

AIRCRAFT Make & Model	Weldon FAA-PMA Part #	REPLACES OEM Part #	REPLACES Dukes Part #
Cessna Most all eligibilities as the 18000-B plus the T182 (S/N 18267716 and up)	XC18000-B	C291504-0102 C291504-0202	4141-00-15, 1515-00-INV, 18000-B
Cessna 172Q (S/N 17275869 thru 17276516), 172RG (S/N 172RG0891 and up), R182 (S/N R18201629 and up)	XC18025-B	C291504-0203, C291504-0204	1500-00-31, 1500-00-35
Cessna 210N, T210N, 210R, T210R, P210N (S/N P21000761 thru P21000834), P210R	18000-B8	C291504-0205	1500-00-38
Cirrus SR20, SR22 (2-Speed)	18050-2B8		5217-00-3
Diamond DA20-C1 (S/N 0002 and up) (2-Speed)	18052-2A		5367-00-1
<i>Pending FAA APPROVAL (below)</i>			
AIRCRAFT Make & Model	Weldon FAA-PMA Part #	REPLACES OEM Part #	REPLACES Dukes Part #
Beechcraft (Textron AV) (B55, E55, 58, G58) (2-Speed)	XC18054-2B8		4404-00-7NV
Beechcraft (Textron AV) (A36 S/N E1946, E2104, E2111 thr E3626, E3631 thr E3635, G36 S/N E3630, E3636 and up) (2-Speed)	18053-2B		4613-00-5 replaces 4613-00-3 and 4613-00-NV



SHELL 2XN Inhibiting oil

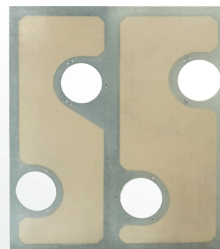


TIME & ENERGY

MD93 SERIES
DIGITAL
CLOCK/USB
CHARGER



COMPOSITE FLOOR PANEL REPLACEMENTS KING AIR FLOORBOARDS



IN STOCK



BEAVER ENGINE MOUNTS

MB100878



NOW STOCKING

