

*Peel.Stick.Fly.™*

## ICE SHIELD PSA Has Arrived!

**Pressure Sensitive Adhesive or Conventional - You Decide!**

Supporting 85% General Aviation aircraft plus Commuter and Business

**FASTER** • Fly immediately after installation

**BETTER** • Improved installation method

**SMARTER** • FAA Approved *ice shield PSA*

### NEW

#### 1000 Micron Stainless Steel Oil Strainer

PN: 2000

ALT: CSB07-01A



Continental Engine Oil Change REQUIREMENT

#### CHRONOS Digital Clock USB Chargers

##### 8 Modes

Local Time, UTC/Zulu Time, Flight Timer, Countdown Timer, Stopwatch, Volts, OAT, Secondary Air Temp



**MidContinent®**  
INSTRUMENTS+AVIONICS

**Halon 1211  
Fire Extinguisher**  
PN: C352TS  
ALT: 352TS

**NOW \$336.67ea USD**

**H3R**  
AVIATION

### COMPLETE CYLINDER ASSEMBLIES



**O-470 / IO-470**

PN: SA47006L-A20P

ALT: 655468A6



**O-320 / IO-320**

PN: SL32006W-A20P

ALT: 05K21100



**O-200 / O-300**

PN: SA10200-A20P

ALT: 655483A11

**SUPERIOR**  
AIR PARTS

### BEST SELLING LED LANDING/TAXI LIGHT EVER THE NEW STANDARD

#### NEW PARMETHEUS™ G3 PAR 36



**Landing**

PN: 01-0772102-10

**NOW \$289.00ea USD**

Reg. \$325.00ea USD

**Taxi**

PN: 01-0772102-15

**NOW \$289.00ea USD**

Reg. \$325.00ea USD



**2.5 TIMES BRIGHTER THAN THE PARMETHEUS PLUS**

FAA STC/PMA Approved

**WAT**  
WAT AVIATION TECHNOLOGIES

### TURN COORDINATOR



**PN: 1394T100-7B**

**ALT: 1394T100-7Z**

- FAA TSO Certified to C3b
- 11-32 VDC Input Voltage Range
- 4,500 Hours MTBF

**MidContinent®**  
INSTRUMENTS+AVIONICS



**SCAN ME**

**SPECIALS IN EFFECT: OCTOBER 1-31, 2021**



### NEWLY APPROVED INTERIOR LIGHTING

**IN STOCK**

**LED No Smoking/ Seat Belt Light**  
Beechcraft King Air, 1900, and PC-12  
PN: 7310004-000

ALT: 1202-006, 1202-300

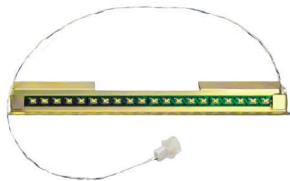
Converts your sign to LED

**THE LED UPGRADE  
EXPERTS**

**Cabin LED Upgrade Kits**

Beechcraft King Air B200, B200T,  
B200GT, B200C, 200CT, B200CT, and  
B200CGT

**NO MORE COSTLY BALLASTS OR  
POWER SUPPLIES**



**FAA-PMA Approved**



### GOVERNORS

**IN STOCK**

**PN: 210631**

ALT: 115-389014-5

**PN: 210632**

ALT: 97-389000-3

**PN: 8210-310**

ALT: 3036817

**PN: B210631**

ALT: 210631

**PN: 8210-410**



### STARTER GENERATOR REPLACEMENT PARTS

**23088-1340EH**

Bearing Shield

**23088-1342EH**

Bearing Shield

**23088-1091EH**

Enclosure

**EHR23088-1321**

Brush

**31708-1480EH**

Thermostatic Switch

**EH03-6009-23**

Bearing

**EH03-6009-25**

Bearing

**EH03-6009-18**

Bearing

**EH03-6010-18**

Bearing Ball

**EH150SG1052-B**

Bearing Ball



**FAA-PMA Approved**

**ORDER TODAY**

**SEGINUS  
AEROSPACE LLC**

## HELICOPTER



**124000-101**

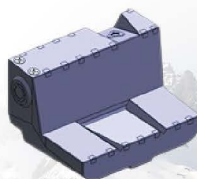
**Inlet Barrier Filter**  
AW109SP, A109E,  
A109S Series



**122300-101**

**Filter Assembly**

AW139, AB139 Series



**IN STOCK**

**6755**

**Fuel Cell**

Bell 206 Series



**1C45-5**

**Fuel Pump Cartridge**

Eurocopter AS350 Series

**RAPCO, Inc.**  
REPLACEMENT AIRCRAFT PARTS CO.



**RG-206**

**BATTERY**



**RG-355**

**BATTERY**

**CONCORDE**



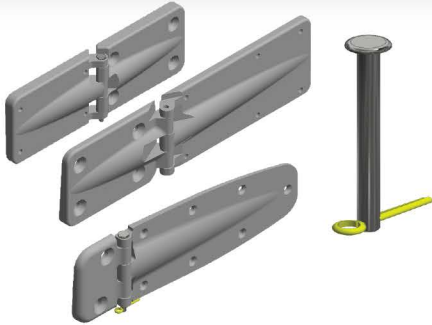
**WF336238**

**Compressor Air Filter Element**

**Donaldson**  
FILTRATION SOLUTIONS

### CABIN/CARGO DOOR HINGES

CESSNA 180, 182, 185, 205, 206, 207, and 210 Series



- Economical
- FAA-PMA Approved
- Available drilled or un-drilled
- Better fit and form than competitor's forced hinges

FAA-PMA Approved

**McFarlane**

### NOSE TIRE SCRAPER FOR CESSNA 208, 208B, AND KODIAK 100

PN: ATI-208TS PN: TSQ-100



- Install in under 20 minutes
- Replacement rubber scrapers available
- Rubber scraper knocks rocks out of the tire tread to keep them from being flung forward through the prop

**McFarlane**



**MD41-1408A**  
Horizontal ACU With  
28V Remote Relay

**MD41-248**  
Remote Relay Unit  
24-pole, 28V



**MidContinent**  
INSTRUMENTS+AVIONICS

### ORION 660 SERIES Forward POS & White Tail POS Light

**Green, 14 VDC**  
PN: 01-0790877-01  
**Red, 14 VDC**  
PN: 01-0790877-02  
**Green, 28 VDC**  
PN: 01-0790877-11  
**Red, 28 VDC**  
PN: 01-0790877-12



FAA/TSO Approved

**WAT**  
WATSON TECHNOLOGIES

### FUEL STRAINER BOWL

CESSNA 150, 152, 172, 177, 180, 182, 185, 188, 206, 207, 210, 337 Series



**PN: MC0756008-1**

- Computer machined (not die cast)
- Gold anodized for extreme corrosion protection
- Engineered to last longer

**McFarlane**

### BRAKE ASSEMBLY

PN: 30-162



With over 27 years of service under our belt, KADEX strives to provide operators in worldwide markets with the best quality OEM, FAA-PMA, and Transport Canada approved parts, airframe & rotatable support, repair, overhaul, and AOG support.

**Beechcraft**

### CESSNA UNIVERSAL JOINT

PN: MC0411257

ALT: 0411257



- Eliminates slack for precise & responsive control
- Replaces worn/corroded universal joints

**McFarlane**

### MOLYKOTE Z Powder Gray 283GM Bottle BEECH FLAP ROLLERS



**DUPONT**

### LED Instrument Post Light Assembly

PN: 01-0771450B23



**IN STOCK**

**WAT**  
WATSON TECHNOLOGIES

### Phillips 20W50 Inhibiting Oil



**NOW \$38.30ea USD**



### HEATER ASSEMBLY



**IN STOCK**

### AV-8 CORROSION INHIBITOR SPRAY

PN: AV8-13.5

**NOW \$38.00ea CAD**





### STARTER

**NEW EXCHANGE**

**IN STOCK**

**149-NL/EC**  
Starter-24 Volt  
**Lyc 235/290/320/340/360/540 Series**



**Sky-Tec**

### ANTENNAS

KADEX stocks Comant, Dorne & Margolin, RA Miller, and ELT Antennas for your aircraft.



**FUEL VENT LINE, LH-EXT**  
**CESSNA 150, 150A Series**  
PN: MC0400311-121



- Stops Fuel Waste and Asphalt Damage
- Improved Fuel Vent Lines
- FAA-PMA Direct Replacement

**McFarlane**

**AVIONICS/ CABIN HEATER**  
PN: THP3094-500



**TANIS**

**PEERCO 321 ADHESIVE REMOVER**  
Designed to remove the adhesive residue when replacing de-icing boots.

**IN STOCK**

- Works in 10 Minutes or Less!
- Semi Jelled - Clings to Vertical Surfaces
- Citrus Based
- Environmentally Friendly
- No Ketones



**AEROSHELL COMPOUND 7**

**REPLACES TKS FLUID**

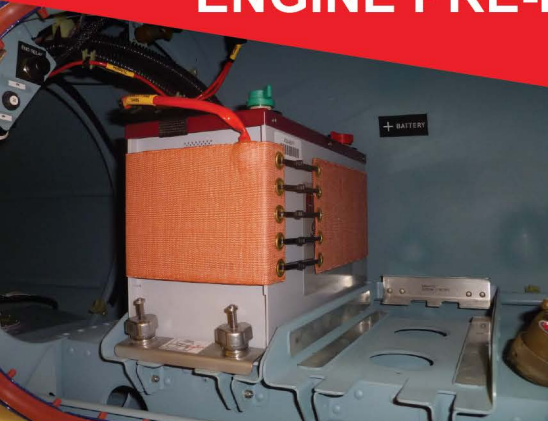
**IN STOCK**



In-flight de-icing of windscreens, propellers, wings, tailplanes, etc. removing frost and light snow/ice from parked aircraft.

**AeroShell**

### ENGINE PRE-HEAT SYSTEM



**TSFDHC6-2972-115**  
DHC 6 Pre-Heat Kit

**TSHB206-2365-115**  
Bell 206 Pre-Heat Kit (115 Volt)

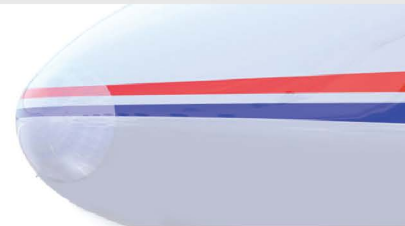
**TSP6CYL-2927-115**  
6 Cylinder Pre-Heat Kit

**TSP4CYL-2925-115**  
4 Cylinder Pre-Heat Kit

**IN STOCK**

**TANIS**

### EROSION BOOTS



Extend your surface and paint life on your aircraft by installing erosion boots.

**PM-21**  
**King Air 90, 100, 200, 300, 350 Series**  
ALT: SJ8665FP005

**PM-73**  
**DHC-6-200/300 Series**  
ALT: SJ8665FP31

**PM-76**  
**DHC-6-100 Series**

**PM-150**  
**Fairchild, Metro Merlin, C-26 Series**  
ALT: 27-92011-009

**PM-170**  
**Piper Navajo, Chieftan Series**  
ALT: SJ8665-FP23

**PM-190**  
**PC-6, PC-12, Cessna R-182, 206, 210, Socata TBM 700 Series**

**PM RESEARCH**

### FUEL BOOST PUMP

KADEX has an extensive stock of New & Overhauled Weldon pumps.



**For Diamond DA20-C1 Series**  
PN: 18052-2A  
ALT: 5367-00-1

**IN STOCK**

**WELDON PUMP**

### ENGINE ISOLATORS



**IN STOCK**

**For DHC2 Beaver**  
PN: MB100878

**For DHC3 Otter**  
PN: MB100879

