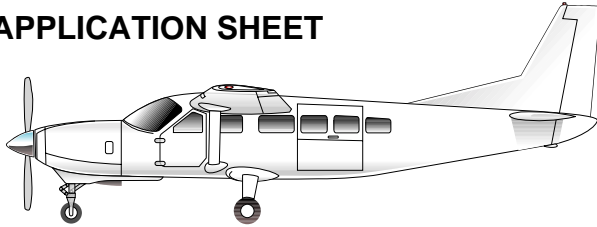


APPLICATION SHEET



**FAA REPAIR STATION UT3R905L
JAA JAR 145.10
FAA-PMA PARTS MANUFACTURING APPROVED**

ENGINE VIBRATION ISOLATORS

Barry Controls™ Aerospace designs and manufactures engine vibration isolation systems to meet the exacting standards of the aircraft industry. These systems are designed to reduce the magnitude of vibration transmitted from the propeller/powerplant to the airframe. Isolation provides: reduced pilot fatigue, passenger comfort, and maximum protection of the aircraft structure and systems from the damaging effects of vibration.

Barry Controls™ Aerospace has been granted Parts Manufacturers Approval (PMA) for vibration isolation systems installed on the applications listed below.

APPLICATIONS

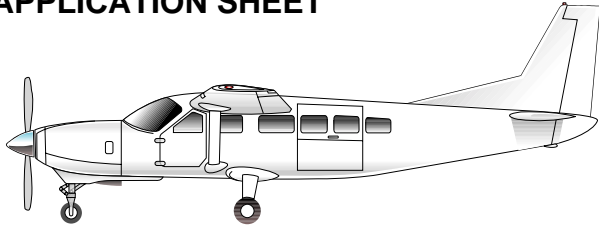
AIRCRAFT MANUFACTURER	POPULAR NAME	AIRCRAFT MODEL	ENGINE TYPE	BARRY CONTROLS™ ISOLATOR PN	PARTS PER ENGINE	PARTS PER AIRCRAFT
Cessna Aircraft	Caravan I	208, 208A, 208B	PT6A-114	00-13849-01	6	6
				00-13855-01	3	3
Cessna Aircraft	Conquest II	425	PT6A-112	00-13849-01	6	12
				00-13854-01	3	6
Cessna Aircraft	Conquest III	441	TPE331-8	00-13849-01	6	12
				00-13851-01	3	4
				85-9342-01	1	2
				00-13850-01	1	2

The above **Barry Controls™ Aerospace** vibration isolators are PMA approved for installation on the applications listed as direct replacements for the following part numbers:

CESSNA PART NUMBER	BARRY CONTROLS PART NUMBER	LORD PART NUMBER
5751012-2	85-9342-01	N/A
9910333-1	00-13849-01	LM600-9
9910333-2	00-13850-01	200PE1210-45
9910333-3	00-13851-01	LM600-12
9910333-4	00-13854-01	LM600-20
C299501-0402	00-13855-01	LM600-60

Barry Controls™ Aerospace vibration isolators are sold as assemblies. The illustrated parts breakdown and part number list is provided as reference only. For additional information, applications assistance, and technical support, please contact our customer service department.

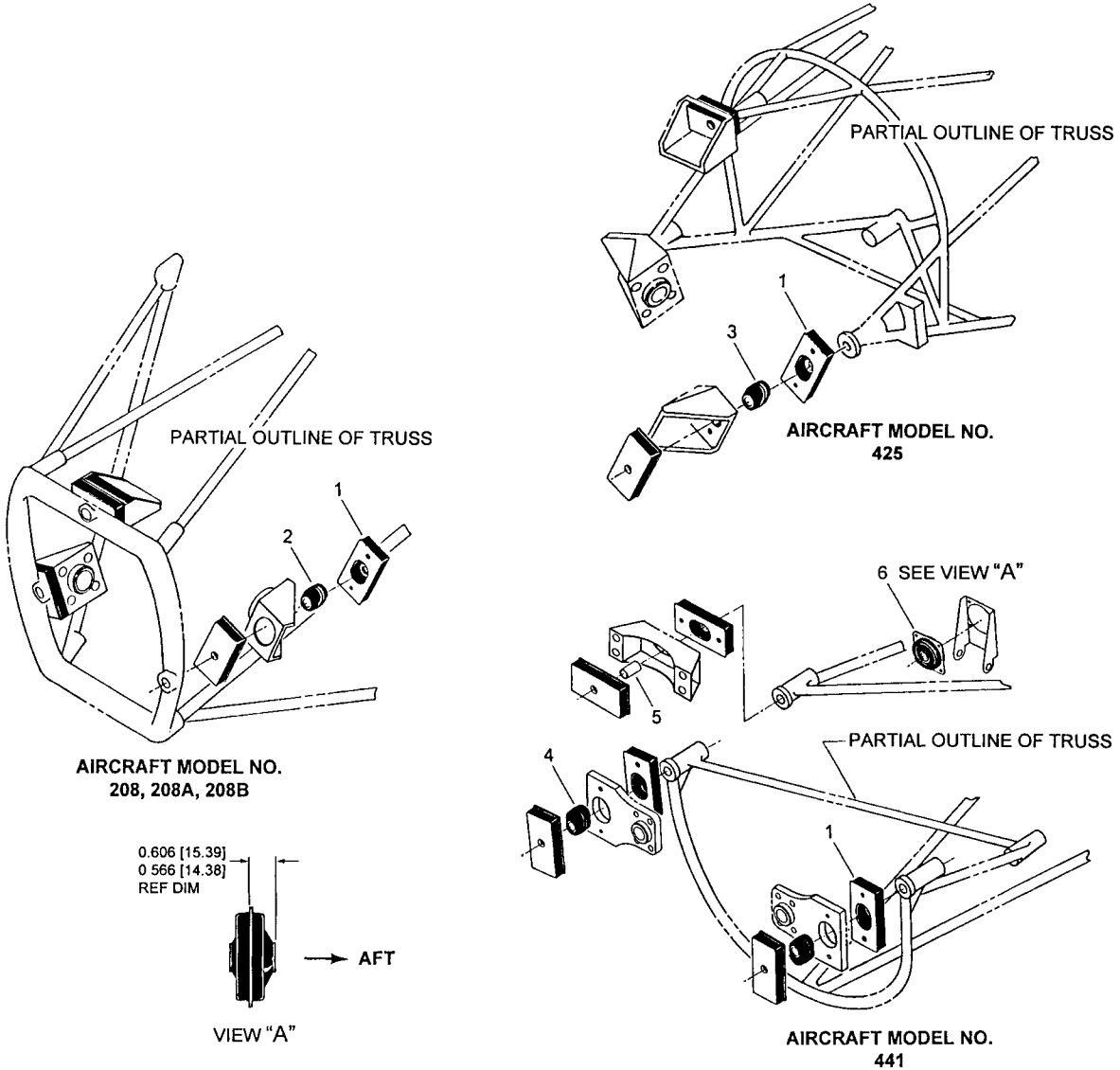
APPLICATION SHEET



BARRY CONTROLS™



**FAA REPAIR STATION UT3R905L
JAA JAR 145.10
FAA-PMA PARTS MANUFACTURING APPROVED**



PARTS LIST

ITEM NUMBER	PART NUMBER	DESCRIPTION	QUANTITY		
			AIRCRAFT MODEL		
			208, 208A, 208B	425	441
1	00-13849-01	PAD, MOLDED ASSEMBLY	6	6	6
2	00-13855-01	CORE, MOLDED ASSEMBLY	3		
3	00-13854-01	CORE, MOLDED ASSEMBLY		3	
4	00-13851-01	CORE, MOLDED ASSEMBLY			2
5	85-9342-01	CORE, BUSHING			1
6	00-13850-01	AFT ISOLATOR ASSEMBLY			1